



SOLVENCY AND FINANCIAL CONDITION REPORT

2020

VHI INSURANCE DAC

Table of Contents

Summary.....	3
A. Business and Performance	11
A.1 Business.....	12
A.2 Underwriting Performance.....	15
A.3 Investment Performance.....	16
A.4 Performance of Other Activities.....	16
A.5 Any Other Information	16
B. System of Governance	17
B.1 General Information on the System of Governance.....	18
B.2 Fit and Proper Requirements	26
B.3 Risk Management System including the Own Risk and Solvency Assessment.....	27
B.4 Internal Control System.....	33
B.5 Internal Audit Function.....	36
B.6 Actuarial Function.....	37
B.7 Outsourcing	38
B.8 Any Other Information	38
C. Risk Profile	39
C.1 Underwriting Risk	41
C.2 Market Risk.....	42
C.3 Credit Risk.....	43
C.4 Liquidity Risk.....	44
C.5 Operational Risk	45
C.6 Other Material Risks	46
C.7 Any Other Information	48
D.Valuation for Solvency Purposes.....	50
D.1 Assets	51
D.2 Technical Provisions	55
D.3 Other Liabilities	58
D.4 Alternative Methods for Valuation	59
D.5 Any Other Information	59
E.Capital Management.....	60
E.1. Own Funds	61
E.2 Solvency Capital Requirement and Minimum Capital Requirement	63
E.3 Use of the duration – based equity risk sub-module in the calculation of the Solvency Capital Requirement.....	63
E.4 Differences between the standard formula and any internal model used.....	63
E.5 Non-compliance with the Minimum Capital Requirement and non-compliance with the Solvency Capital Requirement.....	63
E.6 Any Other Information.....	63
Appendix. Quantitative Reporting Templates	64
Glossary	77

Summary

Vhi Insurance DAC (“Vhi Insurance” or the “Company”) is Ireland’s leading health insurance company by market share. Vhi seeks to continually review and improve its customer product and service offerings and aims to deliver the highest quality, innovative healthcare and wellbeing services. Vhi Insurance supports over 1.1 million customers to live longer, stronger and healthier lives through its comprehensive network of professional healthcare and wellbeing service providers. In addition to Vhi Insurance’s focus on assuring the highest quality of care and medical outcomes, it also seeks to ensure affordability of private medical insurance (PMI) as Ireland’s only indigenous health insurer established solely for the benefit of its members.

Vhi actively assesses and manages the risks associated with the COVID-19 pandemic, adhering to the guidance issued by the Health Service Executive (HSE) and the Department of Foreign Affairs and Trade. The Board of Directors and staff of Vhi took a number of actions focused on assuring business continuity for its customers, staff, healthcare partners and other key stakeholders. Vhi continues to identify, assess and plan for a wide range of potential financial and operational outcomes as matters develop. Arising from these analyses, Vhi continues to take steps to sustain its service to our customers and to protect its business, in a prudent manner.

During 2020, Vhi continued to invest in healthcare benefits and services for its customers. This is achieved through product innovation, benefit development, and, enhancing customer insurance, healthcare and engagement platforms. During 2020, Vhi invested in new medical benefits and additional dedicated services including Well@Home which was developed specifically to meet the needs of those who had been advised to self-isolate during the current COVID-19 crisis by offering them a personalised general wellbeing check-up together with a comprehensive range of clinical supports in the comfort of their own home. In addition to this, a number of new digital clinical services were launched during the year and are available to all Vhi customers at no additional cost. These include physiotherapy, access to a dietician and speech and language therapy.

In March 2020, the Irish Government announced approval of a framework agreement with the private hospitals whereby acute private hospitals operated effectively as public hospitals under Section 38 of the Health Act for a three month period. It was also confirmed that people with the COVID-19 virus would be treated for free, as part of a single public health service. During 2020, Vhi introduced measures in recognition of the issues and challenges facing customers as a result of the ongoing COVID-19 public health crisis. These included a waiver of premium by an average of 50% for a 3 month period (mid May 2020 to mid-August 2020) for Vhi private health insurance customers and a series of hardship measures for customers who found themselves in difficult financial circumstances as a direct result of COVID-19. In December, Vhi also announced a further return of value to customers through waiver of €75 for every adult insured and €25 for every child insured, with payment commencing late January 2021.

Vhi continues to work closely with the Department of Health, the HSE, the private hospital operators and medical consultants to support the Government in this time of national crisis. In January 2021, a new arrangement was agreed between the HSE and the private hospitals whereby private hospitals provide treatment to non-COVID-19 patients of the public hospitals.

**IRELAND’S LEADING
HEALTH INSURANCE
COMPANY**

€45,050k
PROFIT AFTER TAX

OVER 1.1m CUSTOMERS



Vhi customer access to private healthcare continues to be adversely impacted by the effects of the pandemic, contributing to uncertainty regarding near-term healthcare claims costs and related business performance. The Board are monitoring developments closely, seeking to ensure Vhi's continuing prudent conduct of business and fair customer outcomes.

Business and Performance

The business performed satisfactorily during 2020, albeit in the context of unprecedented disruption and uncertainty associated with the COVID-19 pandemic. The company grew its customer portfolio for the sixth successive year and continued its strong focus on service and benefit innovation for customers, as well as prudent cost and financial management. This performance allows Vhi Insurance to reinvest back into the business directly for the benefit of Vhi customers.

Vhi Insurance generated a profit after tax for the financial year of €45,050k, compared with €27,368k during 2019. The year on year increase is principally attributable to increased customer membership and strong premium performance, including the impact of price adjustments during 2019 and early 2020. During 2020, Vhi experienced lower claims principally due to the impact of COVID-19 on customers' decisions to access care, government guidelines regarding travel and social distancing, as well as the agreement between the Health Service Executive and private hospitals effectively including private hospitals within the public health service for a limited period of time. In recognition of the reduced access to private healthcare as well as the adverse economic consequences of the pandemic on its customers, Vhi implemented a range of customer initiatives. Vhi entered agreements with partners to make a range of services available in non-acute settings (including ophthalmic, pain management and certain orthopaedic care), assured ambulatory care for psychiatric patients and implemented a range of tele-health and digital care solutions with partners and through its affiliated entity, Vhi Health & Wellbeing. In addition, Vhi implemented assistance for customers adversely financially impacted by the pandemic. Vhi announced an initial waiver of customers' premium of an average of 50% per plan for a 3 month period mid-year. Vhi also announced in December a further return of value to customers through payment of €75 for every adult insured and €25 for every child insured, with payment having commenced from end of January 2021. Vhi Insurance's Other Technical Income, principally comprising net risk equalisation receipts, reduced compared with 2019, principally due to lower claims costs leading to reduced hospital utilisation credits. Operating costs increased moderately during 2020, reflecting increased investment initiatives as well as costs associated with supporting Vhi's response to COVID-19, including the implementation of Vhi's return of value initiatives to customers. Vhi Insurance also implemented cost containment measures and deferred some key investment initiatives from 2020 to future years. Finally, net investment income reduced compared with 2019, due principally to the significant adverse impact of the pandemic on global financial markets during March 2020, although there was significant recovery from market lows.

[+ Further Information](#)

[A. Business and Performance](#)

System of Governance

The Board of Directors of Vhi Insurance has ultimate responsibility for setting the strategy and oversight of the conduct and performance of Vhi Insurance. The Board recognises that an effective system of governance is essential for the appropriate management of Vhi Insurance. The system comprises:

- a clear organisational structure with well-defined transparent lines of responsibility;
- effective processes to identify, manage, monitor and report risks to which Vhi Insurance is or might be exposed;
- an effective framework and organisation-wide processes to implement regulatory change, to oversee ongoing compliance with regulatory obligations and address remediation where required;
- an adequate and effective internal control framework which provides reasonable assurance regarding the achievement of business objectives;
- policies and procedures to ensure persons who run Vhi Insurance or key function holders within it are on appointment, and throughout their career with Vhi Insurance, fit and proper;
- remuneration practices which foster appropriate cultural behaviours; and
- the use, by the Board, of the Own Risk and Solvency Assessment (ORSA) as a tool to support informed decision making, enabling the Board to understand risks to which Vhi Insurance is or may be exposed in the future and how they impact strategic objectives or capital needs.

The Board seeks to ensure that governance structures are fit for purpose, appropriate and effective for the nature, scale and complexity of the risks inherent in Vhi Insurance's business. This assists Vhi Insurance in complying with all applicable regulatory requirements, including the Central Bank's Corporate Governance Requirements for Insurance Undertakings and the Code of Practice for the Governance of State Bodies. Vhi Insurance is subject to regulatory oversight by the Central Bank of Ireland and its products are subject to regulation by the Health Insurance Authority (HIA), the statutory regulator of the Irish PMI market.

As at 31 December 2020 the Board consisted of 10 members, a majority (7) being independent non-executive directors ("INEDs"). There were two new directors appointed during 2020 with the approval from the Central Bank sought for two further appointments (approved in January 2021). The Board carries out its duties with the support of:

- 5 Board sub-committees, all of which are chaired by an INED; namely the Risk Management and Compliance, Audit, Remuneration, Nomination and Investment Committees;
- 4 executive committees, namely Reserving (chaired by an INED), Executive Risk, Medical Procurement & Healthcare Cost Management Committee and Product & Pricing Approval Committees; and
- the Executive Management team, to whom day-to-day management of Vhi Insurance is delegated.

Vhi Insurance implements the "three lines of defence" model which is used to structure roles and responsibilities for risk and control activity. Within the three lines of defence key functions, Risk Management, Compliance, Actuarial and Internal Audit, are delegated responsibility to monitor and independently challenge the business and to report their findings to a board sub-committee and/or the Board itself.

Vhi Insurance continually evaluates and seeks to make improvements to its systems of governance and Risk Management Framework. During 2020, the Board commenced a review of the group's and Vhi Insurance's systems and structures of governance and expects to implement changes during 2021.

[+ Further Information](#)

[B. System of Governance](#)

Risk Profile

The principal risks and uncertainties of Vhi Insurance have been determined by assessing potential risks in the categories of Capital, Operational, Strategic and People, Conduct & Culture. Vhi Insurance's risk tolerance levels are recorded in the Risk Appetite Statement which is approved by the Board of Vhi Insurance.

The level of regulatory capital required to be held by Vhi Insurance is determined by assessing its Health Underwriting, Market, Operational and Counterparty Default risks. Health underwriting risk and market risk are the biggest contributors to the level of solvency capital required to be held by Vhi Insurance. Health underwriting risk relates to the risk of premiums and reserves for insurance liabilities being insufficient to pay claims and for the risk of catastrophic events. Market risk refers principally to the risks to which Vhi Insurance's investment portfolio is exposed, including equity, concentration, spread, interest rate and property.

Vhi Insurance has most recently reviewed its Risk Appetite Statement during October 2020. Following from the impact of the global COVID-19 pandemic on Vhi's risk profile, some refinements were made to its risk appetite tolerances and key risk indicators.

Risks are monitored and managed on an ongoing basis and overseen by the Board. Vhi Insurance's risk profile was elevated by the global COVID-19 pandemic and Vhi continues to manage its impact on our business. The pandemic led to an escalation in risks around claims volatility, business interruption, product relevance, economic deterioration and cybersecurity. Vhi Insurance has also continued to progress in managing its business mix. The current risk equalisation scheme continues until 31 March 2022. A scheduled review of the scheme is underway and from 1 April 2022 and it is anticipated that the risk equalisation scheme will be improved with the addition of a high cost claimant's pool to increase health credits for sicker customers. Vhi Insurance has further invested in and developed its risk controls for cyber and data protection risks and made its IT systems more resilient. Risk management activity is ongoing to manage COVID-19 and Brexit risks.

Looking ahead into 2021, COVID-19 continues to have a significant impact on the risk profile of the business and we anticipate impacts of COVID-19 will continue beyond the disruption of the pandemic itself. There is a continuing risk that changes in public health provision as well as regulations and political developments could reduce access to private healthcare. This, with the risks of economic contraction and higher healthcare costs, present threats to the attractiveness and affordability of private medical insurance and the size of the market.

Our strategic plans take account of these and other related developments including shifts in the delivery and settings of healthcare caused or accelerated by the pandemic. However, the pandemic has the capability of disrupting our business environment and change programmes.

The costs of COVID-19 treatment have fallen on public health and not on private medical insurers. However, the likelihood of such and similar pandemics is an important risk consideration for our business. Whilst public utilisation of private healthcare facilities has kept claims low, there are increased underwriting risks from higher uncertainty. These risks include the incidence of pent up demand, disruption to claims development, costs of long-

€282,616k

**HEALTH UNDERWRITING
RISK**

€62,547k

**MARKET
RISK**

€45,302k

**OPERATIONAL
RISK**

€9,680k

**COUNTERPARTY DEFAULT
RISK**

COVID and uncertainty over future treatment costs as healthcare facilities have to accommodate new infection control procedures.

COVID-19 was a significant business disruption risk event resulting in remote working for most staff and more fundamental changes for our front line medical staff. We continue to manage risks to staff safety and wellbeing as a priority as we manage the business through the phases of the pandemic and move to changed ways of working in its aftermath. Whilst the business has adapted to these circumstances there remain changes to the nature of some of our operational risks such as business disruption and system failure recovery.

The disruption to health services in public and private hospitals and the travel industry brought about by COVID-19 affected the value of our health and travel insurance propositions. Vhi took a number of steps throughout 2020 to ensure customers were treated fairly and we were clear and timely in our communications. We continue to monitor these risk as the pandemic situation evolves and undertake measures to ensure we keep customers at the heart of our business.

Vhi Insurance DAC conducts, at least annually, an Own Risk and Solvency Assessment (“ORSA”), the purpose of which is to identify Vhi Insurance’s risks and conduct stress tests on these. For the purposes of Solvency II, the ORSA enables Vhi Insurance DAC to determine an appropriate level of solvency capital to protect policyholders and other beneficiaries. This capital level is called the Solvency Capital Requirement (“SCR”).

The 2020 assessment supports the continued use of the standard formula, as prescribed by the European Insurance and Occupational Pensions Authority, for the purposes of determination of Vhi Insurance’s regulatory capital requirements. Vhi Insurance’s capital cover projected over the medium term demonstrates that Vhi Insurance is well capitalised and projects continued compliance with Solvency II capital requirements and risk appetite tolerances approved by the Board. The ORSA continues to inform the development and progress of Vhi Insurance’s risk management plans.

A dividend payment from Vhi Insurance to its parent, Vhi Group is foreseen in Vhi’s Medium Term Capital Plan. Declaration and payment of the dividend has been deferred until 2021 in light of domestic and EU regulatory recommendations in the context of the COVID-19 pandemic.

[+ Further Information](#)

[C. Risk Profile](#)

Valuation for Solvency Purposes

Vhi Insurance prepares its annual statutory financial statements under the historical cost convention, modified to include certain items at fair value, and in accordance with the Companies Act 2014 and Financial Reporting Standard 102 (FRS 102) "The Financial Reporting Standard applicable in the UK and Republic of Ireland" issued by the Financial Reporting Council. Vhi Insurance is also subject to the requirements of the Companies Acts 2014 and the European Union (Insurance Undertakings: Financial Statement) Regulations 2015.

For Solvency II, all assets and liabilities held at the reporting date are valued according to the rules prescribed in the Solvency II regulations. Additionally, the prescribed headings required for Solvency II disclosures differ from those used by Vhi Insurance in its statutory financial statements. The principal differences relate to the insurance technical provisions, reinsurance recoverable and deferred tax assets and liabilities.

On a Solvency II basis Vhi Insurance had total assets of €1,380,582k which is €748,618k lower than the value disclosed in the statutory accounts and €658,615k of liabilities compared with liabilities in the statutory accounts of €1,473,754k. Vhi Insurance's excess of assets over liabilities for Solvency II purposes was €721,968k (2019: €691,741k).

The valuation bases for insurance technical provisions differ between the statutory financial statements and Solvency II. This valuation is detailed in [section D.2](#) of this document. The valuation of the technical provisions under Solvency II gives rise to a revaluation of the related reinsurance and deferred tax assets and liabilities and these are detailed in [section D.1](#) and [section D.3](#) of this document.

Vhi Insurance submitted regulatory returns to the Central Bank during the period in accordance with Solvency II requirements and has complied with the regulations during 2020.

[+ Further Information](#)

[D. Valuation for Solvency Purposes](#)

€1,380,582k

**SOLVENCY II
TOTAL
ASSETS**

Capital Management

It is a regulatory requirement that Vhi Insurance maintains a prudent level of capital which will secure its ability to meet its current and future commitments to policyholders and other beneficiaries. Vhi Insurance acknowledges that the maintenance of an appropriate level of capital is fundamental to meeting its obligations to policyholders.

On an ongoing basis Vhi Insurance determines the appropriate amount and composition of its capital in line with its risk profile and performance objectives. In order to support this objective a Medium Term Capital Plan is prepared on an annual basis.

Vhi Insurance's Eligible Own Funds for 2020 are reduced by a foreseeable dividend of €20,000k payable to its parent company Vhi Group DAC. Under Solvency II regulations, a regulated entity must disclose a dividend when it deems that it is foreseeable. In light of domestic and EU regulatory recommendations in the context of the COVID-19 pandemic, this was not declared nor distributed in 2020 and deferred to 2021.

Vhi Insurance's capital coverage at year end 2020, as measured under the Solvency II Solvency Capital Requirement is within the risk appetite range for Vhi Insurance and comfortably exceeds the minimum requirement under Solvency II.

At 31 December 2020, the Solvency ratio was 205% (2019: 205%). Vhi Insurance had Eligible Own Funds of €701,968k (2019: €691,741k), comprising Tier 1 funds of accumulated insurance underwriting profits of €696,968k (2019: €686,741k) and €5,000k (2019: €5,000k) in equity. The increases in Tier 1 own funds is due to a combination of a foreseeable dividend of €20,000k and general business performance.

Vhi Insurance's Basic Own Funds (the nominal value of its regulatory capital instruments) for the year ending 31 December 2020 was 701,968k (2019: €691,741k). As these funds are generated principally from accumulated insurance underwriting profits and equity they are exclusively Tier 1. As these are all Tier 1, Eligible Own Funds (that portion of Basic Own Funds permitted as regulatory capital under Solvency II) are also €701,968k (2019: €691,741k).

[+ Further Information](#)

[E. Capital Management](#)

205%
**SOLVENCY
COVERAGE
RATIO**

€701,968k
**ELIGIBLE
OWN FUNDS**

€342,956k
**STANDARD
FORMULA
SCR**

A. BUSINESS AND PERFORMANCE

A.1 Business

This is a solo Solvency and Financial Condition Report (“SFCR”) for Vhi Insurance Designated Activity Company trading as “Vhi Insurance” for the year end 31 December 2020. Vhi Insurance underwrites one line of business, private medical insurance (PMI). This report is required annually in accordance with Solvency II requirements to disclose information with regard to the solvency and financial condition of Vhi Insurance.

Supervisory Authority
Supervisor Contact Details

The Central Bank of Ireland
PO Box 559, New Wapping Street, North Wall Quay, Dublin 1

External Auditor
External Auditor Contact Details

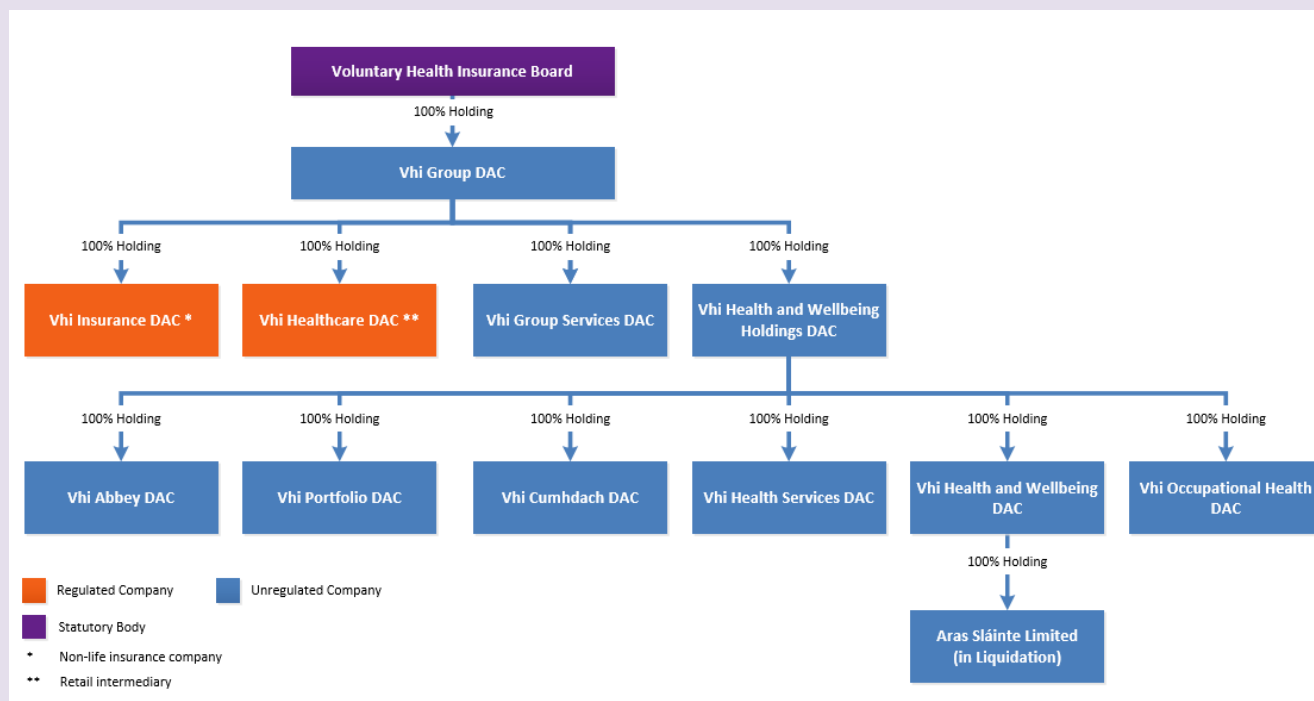
Deloitte Ireland LLP
Deloitte & Touche House, Earlsfort Terrace, Dublin 2, D02AY28

This report was approved by the Board of Vhi Insurance on 31 March 2021 following the recommendation of the Audit Committee. Sections D and E of this report and the related Quantitative Reporting Templates attached have been subject to external audit.

A.1.1 Vhi Insurance DAC and the Vhi group

Vhi Insurance DAC is a part of the Vhi group, which operates exclusively in the Republic of Ireland. The corporate structure of the group and details of the activities of each entity in the group are summarised below.

Vhi Insurance DAC and the Vhi group, as at 31 December 2020



The Voluntary Health Insurance Board is a statutory body established under The Voluntary Health Insurance Act, 1957. The Board oversees the activities of the Vhi group.

Vhi Group DAC is a wholly owned subsidiary of the Voluntary Health Insurance Board and acts as a holding company for the subsidiaries within the Vhi group, all of which are wholly owned.

Company Number: 527605

Registered Office: Vhi House, Lower Abbey St., Dublin 1

Vhi Insurance DAC is a regulated subsidiary which trades as “Vhi Insurance”. It is the Relevant Subsidiary for the purposes of the Voluntary Health Insurance (Amendment) Act 2008 and carries on the health insurance business as a regulated non-life insurance undertaking. PMI, which is classified under Solvency II as ‘Medical Expense’ insurance, is Vhi Insurance’s only line of business.

Company Number: 527606

Registered Office: Vhi House, Lower Abbey St., Dublin 1

Vhi Group DAC is the sole shareholder of Vhi Insurance DAC. There are no other direct shareholders of Vhi Insurance DAC.

The Voluntary Health Insurance Board, which holds shares in Vhi Group DAC, is an indirect qualifying shareholder of Vhi Insurance DAC. The State’s ownership is held through the Voluntary Health Insurance Board. The Minister for Health is the “sponsoring” Minister of the Voluntary Health Insurance Board and is not strictly a shareholder, as no shares have ever been

issued by the Voluntary Health Insurance Board. However, in the current regulatory context, in terms of ownership and control, the Minister could be considered to be the ultimate qualifying shareholder of Vhi Insurance DAC.

The Vhi Health and Wellbeing group companies supplies health and wellbeing services to Vhi Insurance DAC customers. Two other active subsidiaries of Vhi Group DAC are significant providers of services to Vhi Insurance DAC and are detailed below.

- **Vhi Healthcare DAC** regulated as an insurance intermediary by the Central Bank of Ireland and trades as Vhi Healthcare. It provides sales and policy administration for the group's health insurance business. It also offers, on an intermediary basis, the sale of international, travel, dental, life and mortgage protection insurance on behalf of those entities to which it is tied. Vhi Healthcare is tied to Zurich Life Assurance plc for Vhi Life Term Insurance and Vhi Mortgage Protection which are underwritten by Zurich Life Assurance plc, to Collinson Insurance Solutions Europe Limited for MultiTrip Travel Insurance and Vhi Dental Insurance which are underwritten by Great Lakes Insurance SE and Vhi International Health Insurance which is underwritten by Collinson Insurance Europe Limited.

Company Number: 527604

Registered Office: Vhi House, Lower Abbey St., Dublin 1

- **Vhi Group Services DAC** is a subsidiary which provides support services to the other subsidiaries in the Vhi group on the basis of intra-company service agreements with Vhi Insurance DAC, Vhi Healthcare DAC, and Vhi Health & Wellbeing DAC.

Company Number: 538110

Registered Office: Vhi House, Lower Abbey St., Dublin 1

The changes made to the corporate structure of the Vhi group during 2020 did not affect Vhi Insurance DAC. Further information on the entities within the group is available from [Vhi.ie/about/corporate-structure](https://vhi.ie/about/corporate-structure).

A.2 Underwriting Performance

The table below gives a summary of the key components of Vhi Insurance's underwriting performance for the respective accounting years and the factors contributing to the improvement in underwriting performance in 2020 are outlined in the subsequent notes.

Underwriting Performance	Notes	2020 €'000	2019 €'000
Earned premium, net of reinsurance	1	1,510,081	1,416,008
Other technical income, net of reinsurance	2	74,183	117,191
Claims incurred, net of reinsurance	3	(1,106,430)	(1,368,069)
Operating expenses	4	(164,952)	(152,132)
Customer return of value	5	(264,539)	-
Total underwriting result		48,343	12,998

Reconciliation of the total underwriting result to the Financial Statements		2020 €'000	2019 €'000
Total underwriting result		48,343	12,998
Net investment income	See A3	3,490	17,829
Balance on the health insurance technical account		51,833	30,827

Please note there may be minor differences to the information included in the Appendix due to rounding

+ Further Information

[Section A.3 Investment Performance](#)

Note 1: Earned premium

The earned premium net of reinsurance for Vhi Insurance was €1,510,081k, an increase of €94,073k year on year. This is primarily explained by the increase in membership to 1,132,000 (2019: 1,128,000) and strong premium performance, including the impact of price adjustments during late 2019.

Note 2: Other technical income, net of reinsurance

Other technical income includes the net impact of risk equalisation premium credits, hospital utilisation credits and levies under the Risk Equalisation Scheme (RES) as well as the reinsurers share. This decreased in 2020 by €43,008k to €74,183k. The principal driver of this decrease is lower hospital utilisation credits due to lower claims paid as a result of COVID-19.

Note 3: Claims incurred, net of reinsurance

Claims incurred net of reinsurance represent the estimated cost of claims which occurred during the year together with changes in estimate for prior years. This decreased by €261,639k in 2020 to €1,106,432k due to the impact of COVID-19.

Note 4: Operating Expenses

Operating expenses consist of a combination of acquisition costs and administration expenses. For 2020 the operating costs reported were €164,952k (2019: €152,132k).

Note 5: Customer return of value

Vhi customers' access to healthcare was materially adversely impacted by the COVID-19 pandemic during 2020. Medical care was cancelled or deferred for a number of reasons, including agreement between the Health Service Executive (HSE) and private hospitals for the medical care of non-COVID-19 public patients. Vhi implemented a programme to return value to customers, including waiver of premium of an average of 50% for a 3 month period from mid-May until mid-August and an announcement on 7th December, 2020 of payment of €75 and €25 to adult and child members, respectively, commencing during January 2021.

A.3 Investment Performance

The investment strategy of Vhi Insurance prioritises capital protection over the earning of high investment returns and it is deemed that this is in the best interest of Vhi Insurance and its policyholders. As a result, Vhi Insurance mostly invests in highly-rated and short-dated corporate and government bonds.

Vhi Insurance held €1,221,572k in investments as at 31 December 2020, compared with €1,059,053k in 2019. The increase is primarily explained by a fall in claims as a result of the COVID-19 pandemic, for which a return of value to customers is planned in the first quarter of 2021, and by an increase in Vhi Insurance's intercompany payables of €71,298k.

The investment return net of investment expenses in 2020 was €3,490k compared to a return of €17,829k in 2019. The decrease from the prior year relates to relatively smaller decreases in interest rates, and further narrowing of credit spreads for Vhi Insurance's portfolio of corporate and government bonds.

Investment expenses included in the net return were €1,368k for 2020 compared with €1,318k for 2019. The table below illustrates the investment return by asset class, net of related expenses:

Net investment return by asset class	2020 €'000	2019 €'000
Equities - unlisted	103	227
Government Bonds	(142)	1,024
Corporate Bonds	3,681	12,101
Collective Investments Undertakings	(968)	(360)
Derivatives*	(507)	(1,552)
Deposits other than cash equivalents	(77)	(119)
Property (other than for own use)	1,399	6,508
Total investment return by asset class	3,490	17,829

*Vhi Insurance uses forward contracts and futures to hedge against adverse changes in interest rates or exchange rates.

Income from property (other than for own use) is primarily made up of rent charged by Vhi Insurance to other Vhi group companies for the use of properties that it owns.

A.3.1 Gains and/or Losses Recognised Directly in Equity

No gains or losses were recognised directly in equity in 2020.

A.3.2 Investments in Securitisation

There were no direct investments in securitised assets during the year (2019: NIL). Vhi, however, had indirect exposure to investments in securitisation of €70,639k in 2020 (2019: €65,506k) through holdings in Collective Investment Undertakings.

A.4 Performance of Other Activities

Vhi Insurance had no other material income during the reporting period.

A.4.1 Leasing Arrangements

Vhi Insurance had no material financial or operating leasing arrangements in 2020.

A.5 Any Other Information

There are no other additional significant events or material information regarding business and performance that have not been disclosed above.

B. SYSTEM OF GOVERNANCE

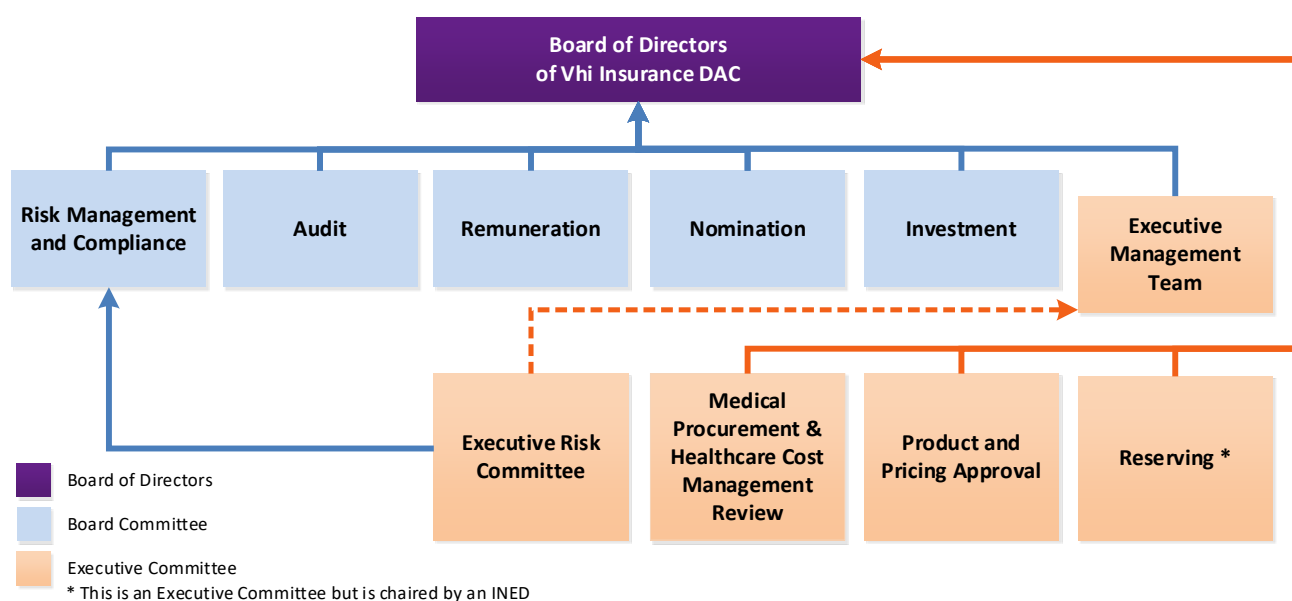


B.1 General Information on the System of Governance

The Board of Directors of Vhi Insurance (the “Board”) believes an effective system of governance is essential for the appropriate management of Vhi Insurance. It is committed to ensuring that Vhi Insurance is well directed and managed in accordance with the high standards of governance required to deliver the sustained success of the business. Vhi Insurance is subject to and complies with the relevant provisions of the Central Bank of Ireland’s (“Central Bank”) Corporate Governance Requirements for Insurance Undertakings, the Code of Practice for the Governance of State Bodies and related regulations and codes. The Board attests to compliance with relevant requirements in annual Compliance Statements. Compliance, Internal Audit and Risk Management programmes are maintained, documented, monitored and reported upon. Accordingly, the Board considers the system of governance is appropriate, effective and adequate to the nature, scale and complexity of the risks inherent in its business.

The material components of the system of governance are described in the sections below.

The Board, Sub-Committees, Executive Management Team and Executive Committees, as at 31 December 2020



B.1.1 The Board of Directors of Vhi Insurance

At the end of 2020 the Board consisted of 10 members, a majority (7) being independent non-executive directors (“INED”) with 3 executive directors (“ED”). Vhi Insurance considers the independence of a majority of its Board members to be a key feature to good corporate governance. All non-executive directors are deemed independent directors who can exercise sound judgement and decision making independent of the views of management, political interests or outside interests.

The Board recognises that diversity is key to the Board’s ability to function effectively. It is the view of the board that diversity of skill sets, experiences, qualifications, gender and background help to maximise and balance the decision making process and reduce behaviour and culture risks. The Board currently benefits from the broad professional and educational backgrounds of its directors, which collectively include accounting, actuarial, medical, financial, governance, risk management and regulatory experience as well as experience in both domestic and international organisations.

As at 31 December 2020, two new independent non-executive director PCF applications have been submitted to the Central Bank. The Board believes its composition comprises an appropriate balance of executive and non-executive directors and is suitably qualified to meet its strategic objectives and any applicable regulatory requirements.

The Board of Directors of Vhi Insurance, as at 31 December 2020

Director	Type
Paul O’Faherty (Chairperson)	INED
John O’Dwyer (Chief Executive)	ED
Joyce Brennan	INED
Mike Frazer	INED
Mary Halton	INED
Dean Holden	INED
Finbar Lennon	INED
Declan Moran	ED
Greg Sparks	INED
Brian Walsh	ED

Profiles for each Director are available on Vhi.ie.

The Role and Responsibilities of the Board

The Board is responsible for the effective, prudent and ethical oversight of Vhi Insurance and the setting and oversight of:

- Vhi Insurance’s business strategy.
- Vhi Insurance’s Risk Appetite Statement.
- The amounts, types and distribution of both internal capital and own funds adequate to cover the risks of Vhi Insurance.
- The strategy for the on-going management of material risks.
- A robust and transparent organisational structure with effective communication and reporting channels.
- A remuneration framework that is in line with the risk strategies of Vhi Insurance.
- The Own Risk and Solvency Assessment (ORSA) process.
- An adequate and effective internal control framework.

The Board seeks to ensure it has:

- The necessary knowledge, skills, experience, expertise, competencies, professionalism, fitness, probity and integrity to carry out its duties.
- A full understanding of the nature of Vhi Insurance’s business, activities and related risks.
- A full understanding of members’ individual direct and indirect responsibilities and collective responsibilities.
- An understanding of Vhi Insurance’s financial statements.

The Board gives effect to the above through its receipt and review of appropriate management information, regular oversight of the business and an annual cycle of training and briefings, through the support of board sub-committees and executive committees and by having in place policies and structures to enable the appointment of appropriate employees.

Reserved Powers and Delegated Authority

The Board reserves certain key matters for itself and delegates others (within specified limits) to Board sub-committees and to the Chief Executive, who in turn delegates authority to executive committees and management. The Terms of Reference of the Board stipulate which decisions are reserved for the Board and which decision-making powers it has chosen to delegate.

Vhi Insurance has a delegated authority framework which includes processes and structures which are reviewed on an ongoing basis. It identifies those situations in which it is appropriate to use delegations of authority in order to ensure the effective management of the business and the procedures that should be followed when such delegations are made.

Vhi Insurance recognises that the carrying out of certain roles and activities requires specific skills, knowledge and expertise, and should only be performed by suitably competent people. It is on this basis that individuals are delegated the authority to perform tasks and this delegation comes from the top down.

B.1.2 Board and Committee Structure

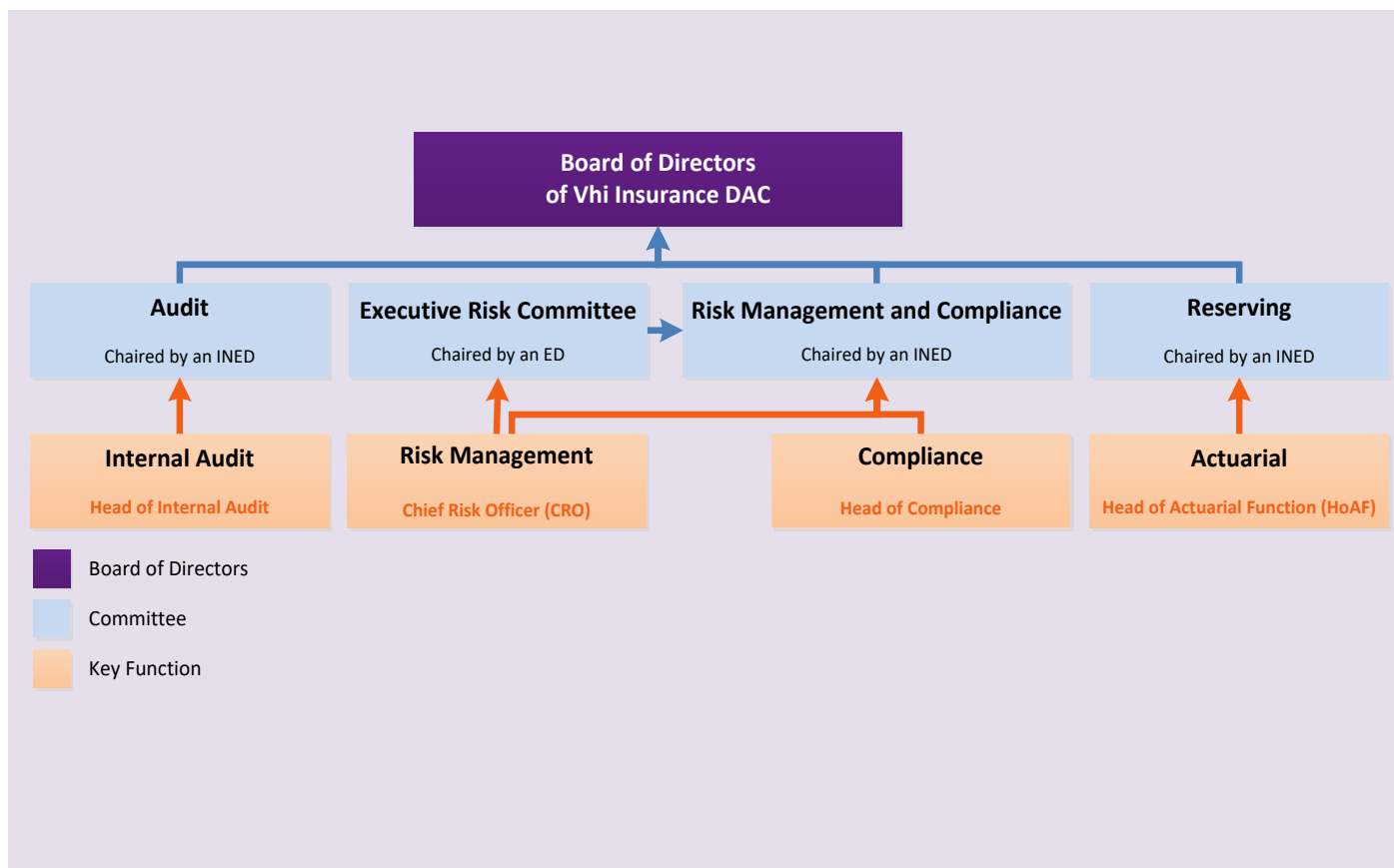
The Board delegates authority to a number of committees and the Executive Management Team (“EMT”), which acts on behalf of the Board in respect of certain matters. Each committee has detailed Terms of Reference that articulate the role and position of the committee in the governance framework. The Terms of Reference are reviewed annually by the committees to ensure continuing appropriateness, are approved by the Board and require Board approval for material alteration.

Committee	Meeting Frequency Minimum	Responsibilities
Risk Management and Compliance Committee	6 times a year	Promotes the overall effectiveness of corporate governance including a culture of compliance and risk management, and in particular monitors and reviews the scope, effectiveness, resources and activities of the Risk Management and Compliance functions. In addition, ensures that the Risk Appetite Statement is appropriate to the strategy and risk appetite of Vhi Insurance and its business; review annually the Own Risk and Solvency Assessment (“ORSA”) and review and recommend for approval of the Board the annual Risk Management and Compliance Plans.
Audit Committee	Quarterly	Provides an independent review of financial reporting and satisfies itself as to the effectiveness of Vhi Insurance’s internal controls and as to the adequacy and sufficiency of external and internal audits. In addition, it monitors the activities of the Internal Audit Function and approves the annual Audit Plan.
Remuneration Committee	At least Twice Annually, or as required	<p>On behalf of the Board, the Remuneration Committee monitors and makes recommendations to the Board with regard to Vhi Insurance’s overall performance management and reward philosophy for the Chief Executive, the EMT and other senior executives.</p> <p>The annual remuneration levels for the Chairman and each non-executive Director of the Voluntary Health Insurance Board are set by Government. The Chairman and non-executive directors of the Board of Vhi Insurance are remunerated on the same basis as the Voluntary Health Insurance Board. Executive board members do not receive remuneration for their roles on the Board. The Chairman and non-executive directors are not remunerated for additional chairmanship/directorship they hold in the Vhi group. They are remunerated for one position only.</p>
Nomination Committee	At least Twice Annually, or as required	On behalf of the Board, the Nomination Committee is responsible for monitoring and making recommendations to the Board on the composition of the Board, making proposals for succession planning for its membership and for identifying and recommending executive and non-executive candidates for appointment to senior executive and Board positions.
Investment Committee	Quarterly	Advises on and monitors the management of Vhi Insurance’s investments to ensure they align with investment policy, solvency requirements and risk considerations. It keeps under review, monitors and makes recommendations to the Board on investment policy, the investment mandate, the investment managers and the custodian.

Committee	Meeting Frequency Minimum	Responsibilities
Reserving Committee	Quarterly	An advisory and oversight committee, the purpose of which is to oversee the governance of the setting of Vhi's reserves and its compliance with the Board approved Reserving Policy. On a quarterly basis, the Committee considers the adequacy of the reserves, related governance, data and control considerations. In addition, it reviews annually the Actuarial Report on Technical Provisions and the Peer Review Report.
Executive Management Team	Fortnightly	The EMT, in conjunction with the Chief Executive, is the decision-making unit to which is delegated day-to-day running of Vhi Insurance. It is responsible for, in conjunction with the Board, the effective, prudent and ethical oversight of Vhi Insurance, the development of the business strategy for consideration by the Board, the execution of the agreed strategy and ensuring that risk and compliance are properly managed.
Executive Risk Committee	Monthly	Assists the RMCC in fulfilling its oversight responsibilities, with respect to risk management, ensure that the Risk Management Framework is implemented across the business and the Risk Management Framework is appropriately designed and implemented.
Product and Pricing Approval Committee	Quarterly	Oversees the composition of benefits, services and costs that make up the overall product proposition to customers, the committee is authorised to approve changes within parameters delegated by the Board. The focus of the committee is to optimise the value of the overall product proposition for our customers and maintain appropriate prices to cover the costs of meeting our customer's healthcare needs into the future.
Medical Procurement & Healthcare Cost Management Committee	Bi Monthly	The Committee is tasked with identifying and supporting the implementation of agreed cost containment initiatives that seek to slow the rate of growth in claim costs whilst also maintaining competitive contractual relationships with key providers and ensuring access to the most up to date health services for customers. The Committee also places a focus on innovation and reviews and provides guidance on the overall multi-annual Provider Strategy.

Vhi Insurance has four key functions; Risk Management, Compliance, Actuarial and Internal Audit.

Key Functions and Reporting Lines, as at 31 December 2020



Key Function	Main Roles and Responsibilities
Internal Audit Function	<p>Provides an independent appraisal service to the Board and management. It provides independent assurance on the adequacy and effectiveness of the system of internal control and elements of the system of governance. Where appropriate, this role extends to the relevant controls surrounding outsourced service providers and other external parties, as well as Vhi Insurance's own internal controls.</p> <p>+ Further Information Section B.5</p>
Risk Management Function	<p>Oversees the operation of the Risk Management Framework and, the methodologies and standards to enable business units to identify, measure, monitor and manage their own risks and for providing advice, support and challenge to business units in relation to risk and associated controls. In addition, the function also monitors and reports on the overall risk profile of Vhi Insurance, including new and emerging risks to the Board in addition to monitoring the effectiveness of adherence to the requirements of the risk management framework. The Risk Management Function is a 2nd line function headed by the CRO who responsible for the Risk Management Function on behalf of the Board.</p> <p>+ Further Information Section B.3</p>

Compliance Function

Oversees and ensures that Vhi Insurance is being operated in compliance with legislation and regulation, and with related approved internal compliance and governance processes and procedures. The function monitors the compliance risk of Vhi Insurance and provides compliance advice, support and challenge to the business units of Vhi Insurance in addition to guiding and coordinating preparation for and the implementation of, the management and remediation of regulatory requirements.

+ Further Information [Section B.4.3](#)

Actuarial Function

Coordinates the calculation of the technical provisions, capital management programme and supports the provision of pricing and management information. The function is accountable for setting actuarial methodology, reporting to the Board on the adequacy of reserves and capital requirements, and on the adequacy of underwriting and reinsurance arrangements.

+ Further Information [Section B.6](#)

Vhi Insurance is committed to ensuring that an effective structure is in place providing for co-operation and information sharing between key functions; however, each has defined responsibilities as set by the Board. The four key functions are integrated into the group organisational structure in a way that seeks to ensure no undue influence, control or constraint is exercised on the functions with respect to the performance of their duties and responsibilities by other functions, senior management or the Board. Each key function maintains operational independence by sharing no staff with other functions and ensures no conflicts of interest arise between key function employees and the activities they undertake. Each key function is led by a senior manager, employed by Vhi Insurance, who is assessed to ensure s/he is 'fit and proper', is of good repute and who is approved for appointment by the Central Bank. Key function employees are required to have the appropriate skills, qualifications and experience to fulfil the requirements of their roles.

Each key function reports directly to a committee chaired by an INED of the Board. Each function has the necessary authority and appropriate standing within Vhi Insurance, as well as unrestricted access to all relevant information necessary to carry out its responsibilities and sufficient resources to discharge its role. Confirmation of these arrangements being in place is provided by the heads of the key functions to relevant committees. The Chief Risk Officer ("CRO") and Head of Compliance meet regularly, on a private basis, as required, with the Chairperson of the RMCC. The Head of Internal Audit meets privately with the Chairperson of the Audit Committee on a number of occasions annually and the head of each key function also has on-going direct access to the Board Chairman, as required. Each function provides regular scheduled reports to their reporting committee and may escalate issues of concern to the committee(s) or the Board, as deemed appropriate. The Board receives copies of the reports provided to the respective committees and are provided with updates as to the activities of the key functions from the chairpersons of the committees. The head of each function also reports directly to the Board at least annually.

B.1.4 Material Changes in the System of Governance

During 2020, no material changes to the structures and systems of governance were made. The Board has commenced a review of the group's and Vhi Insurance's systems and structures of governance and expects to implement changes during 2021

B.1.5 Material Transactions with Shareholders, with persons who exercise a significant influence on Vhi Insurance and/or with members of the Board

Shareholders	Vhi Insurance has one shareholder, Vhi Group DAC. Vhi Insurance proposed (and in light of domestic and EU regulatory recommendations in the context of the COVID-19 pandemic), deferred the declaration and payment of a final dividend of €20m to its parent, Vhi Group DAC, until 2021.
Persons who exercise a significant influence on Vhi Insurance	There were no material transactions with any persons who exercise a significant influence on Vhi Insurance in 2020.
Members of the Board of Directors of Vhi Insurance	There were no material transactions with members of the Board of Directors of Vhi Insurance in 2020.

B.1.6 Remuneration Policy and Practices

Vhi Insurance's remuneration policies seek to ensure that the approach to remuneration is aligned with Vhi Insurance's operations, business environment, strategic objectives, effective risk management, best practice and any regulatory or legislative requirements.

Remuneration policies are designed to attract, retain and motivate staff of the required calibre for the successful delivery of Vhi Insurance's strategic and operational objectives. The remuneration framework and policy are kept under review to ensure they remain fit for purpose and are consistent with and promote sound and effective risk management. The remuneration arrangements for Board members and the EMT are set out in [section B.1.2](#). The table below sets out Vhi Insurance's remuneration framework which incorporates four components.

Fixed Pay Components	
Fixed Remuneration (Base Pay)	<p>Vhi Insurance aims to clearly define expected performance through a structured system of performance management and uses this as the basis for remuneration decisions. Any remuneration increases made are in line with National Wage Agreements or other collective negotiation procedures, subject to Vhi Insurance's ability to pay. Performance is reviewed at least annually.</p> <p>Fixed remuneration also includes specific role required supplements including car and travel allowances which are provided in accordance with approved expenses and company car policies.</p>
Pensions	Pension schemes for Vhi Insurance employees are linked to the Voluntary Health Insurance Board, the ultimate parent entity of Vhi Insurance. The general terms of the pension schemes are subject to collective bargaining agreements and oversight from the Department of Health and the Department of Public Expenditure and Reform. The Scheme Rules of the Vhi group's pension schemes do not permit supplementary pension or early retirement schemes.
Benefits	Staff are provided with a range of benefits based on individual employment contracts and market practice.
Variable Pay Components	
Performance Based Remuneration	Performance based remuneration is subject to the achievement of individual qualitative objectives, in certain cases quantitative objectives and the business performance of Vhi Insurance and the wider Vhi group. It is carefully managed with objectives designed and balanced to ensure they foster an appropriate culture that unwanted behaviour, including excessive risk taking, are

not incentivised. There are no contractual commitments to pay a minimum level of performance based remuneration.

There are no options for directors, executive management or employees to acquire shares or share options in Vhi Insurance.

B.2 Fit and Proper Requirements

Vhi Insurance adheres to the Central Bank's Fitness and Probity regime which sets minimum standards aimed to ensure that all persons who effectively run Vhi Insurance, or have other key functions, are at all times competent and capable, act honestly, ethically and with integrity and are financially sound. In addition to complying with these minimum standards, Vhi Insurance applies its own internal business requirements and standards and is responsible for ensuring that staff meet the required standards, both on joining Vhi Insurance, and throughout their careers with Vhi Insurance.

Vhi Insurance requires Board members and employees to meet Vhi's ethical standards and to have the qualifications, skills and experience which are essential for them to carry out their duties and responsibilities. Vhi Insurance gives effect to the fitness and probity regime through a Fitness and Probity Standards Policy and supporting processes. Vhi Insurance has identified and documented in the Fitness and Probity Standards Policy Vhi roles which are subject to the fitness and probity regime as controlled functions.

For appointments to the Board of Directors of Vhi Insurance, the Nomination Committee take full account of the Central Bank's fitness and probity requirements and Corporate Governance Requirements for Insurance Undertakings, in addition to Vhi Insurance's internal requirements, when making recommendations for Board vacancies. The Committee takes into consideration factors including but not limited to; the time commitment required for the role, the challenges and opportunities facing Vhi Insurance, possible conflicts of interests, the independence of any proposed non-executive director and the balance of executive and non-executive directors on the Board. In addition, the evaluation of persons for Board positions is supported by a Diversity Policy and Skills Matrix, which seek to ensure the Board consists of members with diversity of backgrounds, viewpoints, skills, knowledge and expertise to meet both current and future anticipated needs and enable sound and prudent management of Vhi Insurance.

With regard to Vhi Insurance employees in controlled functions, required role specific competencies are set out in written job descriptions. Assessment of applicants against role specific requirements, in addition to their ethical and culture fit for Vhi, are carried out during the recruitment process, which includes both internal assessment and external verification processes. If a candidate meets the role requirements due diligence checks are carried out. They include, but are not limited to; copies of relevant qualifications and transcripts, professional body checks, previous employer reference checks, self-certification of potential conflicts of interest, regulatory checks and judgement searches, as relevant. Compliance with minimum competency code requirements and concurrent responsibilities are also checked, as appropriate and required.

Certain candidates for controlled functions are subject to pre-approval by the Central Bank before appointment (PCFs), including members of the Board and the heads of key functions. Before taking up a PCF position the candidate must complete and submit an Individual Questionnaire to the Central Bank for its consideration. If approval is not given the candidate is not appointed to the position.

The fitness and probity assessment processes are carried out in advance of position offers and appointments. The assessment process for Board members is facilitated by the Nomination Committee, Head of Compliance and the Department of Health. The assessment process for other key function holders is carried out by the Head of Compliance and HR Function.

Vhi Insurance does not allow a person to perform a controlled function unless it is satisfied that the person complies with the fitness and probity requirements of the Central Bank and has agreed to abide by them on an ongoing basis. This includes a commitment to continuing their professional development and continuing in their roles is contingent on their retention of required qualifications. Annually, persons in controlled functions attest to their continuing to meet the fitness and probity requirements of the Central Bank. Staff, including Board members or other key function holders, who no longer meet fitness and probity requirements can be removed from their position.

B.3 Risk Management System including the Own Risk and Solvency Assessment

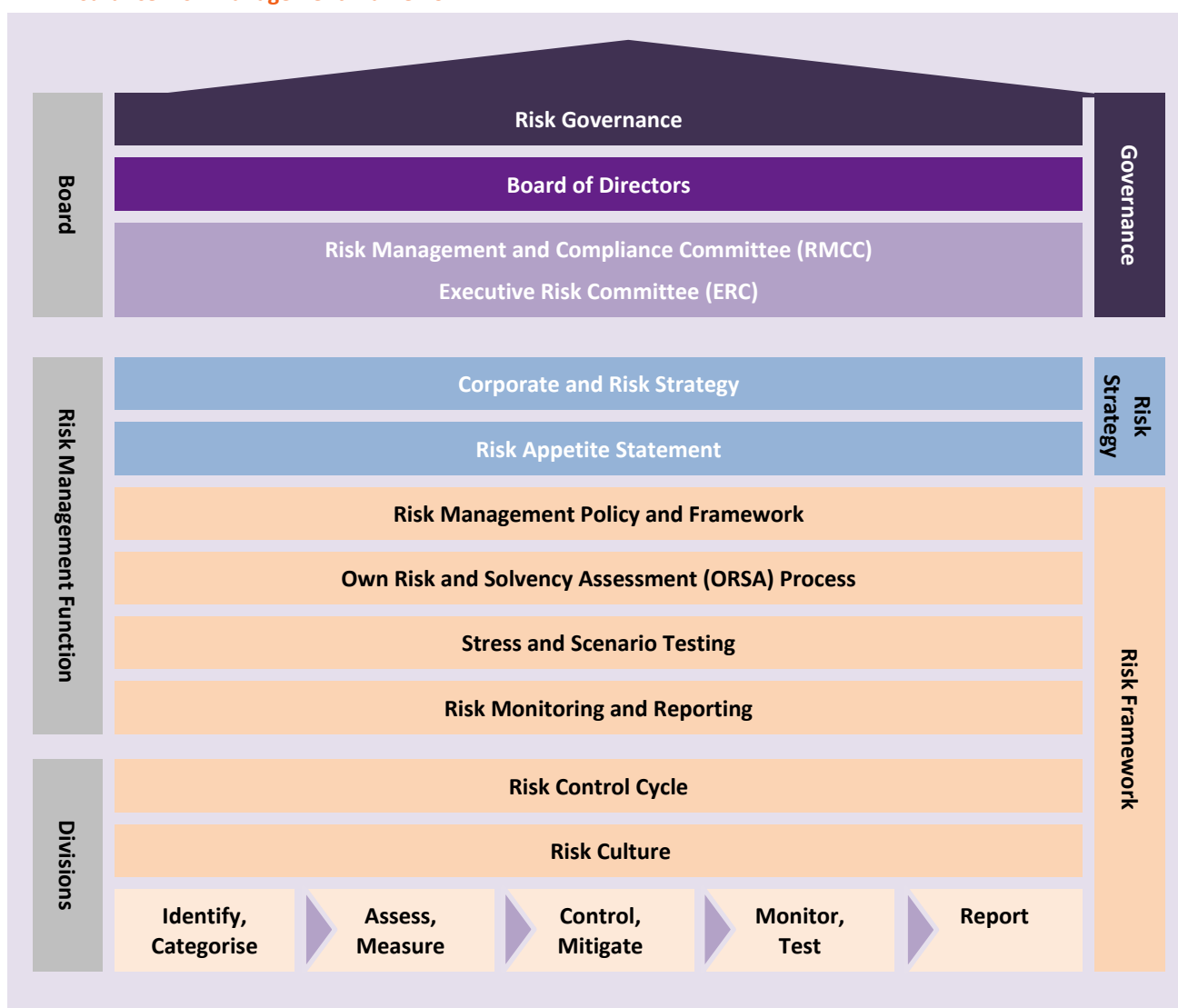
B.3.1 The Risk Management System

Vhi Insurance is subject to internal risks arising from its business operations and external risks arising from economic conditions in Ireland and global financial markets in general, as they affect the PMI sector.

Delivering on the strategic intent of Vhi Insurance requires an understanding of the nature and significance of the risks to which it is exposed. This enables Vhi Insurance to make the best decisions for Vhi Insurance, customers and stakeholders and enables it to sustainably deliver on its objectives into the future.

Vhi Insurance operates a Risk Management Framework which ensures an integrated and consistent approach to managing risk with processes to identify, measure, control, monitor and report on risks to enable the achievement of Vhi Insurance's goals and objectives. This is implemented through a 'three lines of defence' approach, described in [section B.4.1](#), to manage risk; incorporating roles, responsibilities and accountabilities including governance and risk based decision-making. Vhi Insurance is engaged in continuing review of its Risk Management Framework, implementing an enhanced Risk Control Self-Assessment (RCSA) structure and process. Vhi Insurance's classification and reporting of risk in its Risk Appetite Statement, ORSA and Risk Profile will take account of these ongoing changes and be reflected in subsequent SFCRs.

Vhi Insurance Risk Management Framework



The Risk Management System is underpinned by:

Risk Governance

The practice, procedures, attitudes and approaches to enable the consistent and effective operation and oversight of the management of risk. It includes rules, oversight, control and assurance in the management of risk principally through the setting of risk appetite, policies, roles and responsibilities with the 'three lines of defence' model and oversight provided through reporting processes.

Risk Strategy

The Risk Management Strategy aims to:

- Protect Vhi Insurance's assets and prospects and take the right risks.
- Take calculated risks to address competitive exposures in Vhi Insurance's business model.
- Take appropriate risks to support the achievement of higher returns.
- Avoid risks that could fundamentally damage Vhi Insurance's capital base.
- Accept operational risk where it is appropriately managed and reduce it where it is cost effective to do so.
- Minimise any significant clinical, reputation and compliance risks.

These objectives seek to ensure that risks stay within risk appetite tolerances over the medium to long term planning horizon with risks managed to enhance risk weighted value.

Risk Appetite Statement

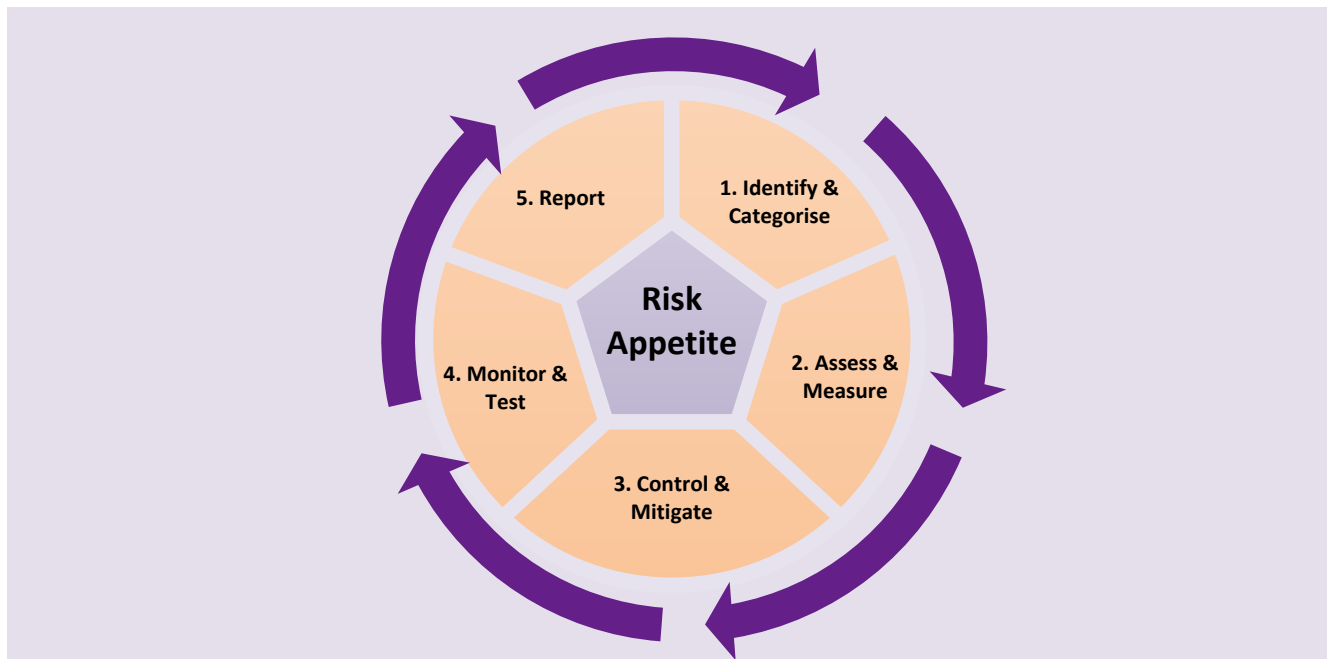
The level and type of risk Vhi Insurance is prepared to accept to achieve its goals with limits and tolerances set for the main business risks. Risk appetite informs the strategy, business planning and operational processes and seeks to ensure their execution is in line with the risk appetite parameters set by the Board.

Risk Framework

Processes through which risk is managed as a continuous cycle of activity and enables understanding of the nature and significance of the risks (at an individual and aggregated level) to which Vhi Insurance is exposed, including the sensitivity to those risks and its ability to mitigate them.

Enterprise Risk Management ("ERM") is the methodology and process, which seeks to understand and manage risk, to support the achievement of Vhi Insurance's objectives and minimise the effects of risk on capital requirements, by addressing the full spectrum of risks Vhi Insurance is exposed to and managing the combined impact of those risks. The processes supporting ERM are described below. Vhi Insurance made a number of changes to improve its Risk Management Framework throughout 2020 and we will continue to embed these changes in 2021 to further ensure that there is a consistent and holistic approach to risk management across the business.

Enterprise Risk Management (ERM) Life Cycle/ Risk Control Cycle



Risk Framework

1. Identify and Categorise	Risks, including emerging risks, are identified at business unit (bottom-up) and organisational (top-down) level.
2. Assess and Measure	<p>Risks are assessed in terms of likelihood of occurrence and impact, with key risk indicators and underlying drivers considered, to determine how they interact. Where risk appetite tolerance breaches or risk events are identified, a mitigation plan is put in place with controls assessed to determine adequacy and effectiveness.</p> <p>Business change proposals are subject to a risk assessment to seek to ensure proposals are in line with risk appetite before the change is implemented.</p>
3. Control and Mitigate	<p>Controls are implemented to mitigate risk. Control effectiveness is assessed on a regular basis, with shortcomings reported to the Risk Management Function. Risk assessments of business change proposals consider control adequacy and effectiveness.</p> <p>The regular review and aggregation of risks identifies the amount of capital Vhi Insurance requires and any requirement for additional controls.</p>
4. Monitor and Test	<p>The business units monitor key risk indicators and underlying risk factors regularly to inform risk self-assessments, which includes an assessment of control adequacy and effectiveness. The Risk Management Function reviews and challenges these risk self-assessments. The Risk Management Function carry out the activities as set out in their annual monitoring plan. The internal and external auditors test key controls and processes. The Executive Management Team (EMT), The Executive Risk Committee (ERC), RMCC and Board review the material risks, controls, mitigation plans and capital adequacy on a regular scheduled basis.</p>
5. Report	<p>Risk reporting is a key component of the Risk Management Life Cycle including regular (e.g. risk assessments) and ad-hoc (e.g. risk appetite tolerance breaches, risk events) reporting by business units to the Risk Management Function.</p> <p>The Risk Management Function provides the ERC, RMCC and the Board with a regular update on the effectiveness of the Risk Management Framework including details of the material risks facing Vhi Insurance and management's implementation of mitigating actions. This is provided through the risk appetite, risk profile, control framework and risk event reporting.</p>

B.3.2 How the risk management system including the risk management function are implemented and integrated into the organisational structure and decision-making

The Board is ultimately responsible for ensuring an appropriate Risk Management Framework is in place, and operates effectively across Vhi Insurance.

Oversight on the appropriateness and effectiveness of the Risk Management Framework is underpinned by a governance framework which includes:

- An organisational structure with responsibilities delegated from the Board to management.
- Clear Terms of Reference for the Board, its sub- committees and executive committees.
- An Executive Risk Committee (ERC) which supports the Board and RMCC in their responsibilities.
- Right of access for the CRO to the Board and reporting on specific areas of risks initiated at the request of the Board or on the initiatives of the Risk Management Function.
- Ownership of policies.
- Risk and Compliance functions overseeing adherence and compliance.

Risk Appetite

Risk appetite makes explicit the Board's risk management requirements. The Risk Appetite Statement focuses on the following areas:

- Managing financial strength.
- Engaging in sustainable business activity.
- Operating in an effective and efficient manner.
- Treating customers in a responsible, fair and compliant manner.

The Risk Appetite Statement is reviewed at least annually and in the event of material changes to Vhi Insurance's activities or operating environment. Decision making in running the business is necessitated by change, including strategic change and changes in the business environment, with a risk assessment performed on business change proposals.

Risk Policies

Risk policies define the high level rules, standards and underlying principles for the management of risk. These policies are reviewed at least annually or where there is a material change to risk appetite.

Risk Framework

The Risk Management Framework sets out the roles and responsibilities and accountability for ensuring that risk is managed appropriately and consistently across the organisation. This includes the 'bottom-up' approach to identifying, assessing, managing and reporting on risks through the Risk and Control Self-Assessment process. It also sets out the key behaviours and culture that indicate a sound risk culture across Vhi Insurance.

The 'top-down' approach includes an annual identification exercise completed by the ERC and presented to the RMCC which considers the nature and significance of the risks to which Vhi Insurance is exposed.

Own Risk and Solvency Assessment ("ORSA") Process

The ORSA process is a continuous process comprising annual and recurring activities, undertaken at various times throughout the year, that consider risk and capital impacts on decision making and in particular business and financial planning.

[+ Further Information](#) [Section B.3.3](#)

Together with the other three functions, Risk Management play a significant role in ensuring the effectiveness of the Risk Management Framework. These functions retain responsibility for taking the decisions necessary for the proper performance of their duties without interference from other functions or, senior management.

B.3.3 The ORSA

The Own Risk and Solvency Assessment (ORSA) process assesses the main risks to Vhi Insurance, including relevant considerations from the wider Vhi group and is a key part of our Risk Management Framework.

Own:	Reflects our business plan and strategy.
Risk:	Provides a risk assessment of business plans, quantifies potential risk impact over the medium term and informs our review of our Risk Appetite Statement and Recovery Plan.
Solvency:	Evaluates possible impacts on solvency of stress events and our capital requirements.
Assessment:	Assesses projected solvency needs considering our risk profile, reaches conclusions for its capital requirements and makes recommendations for management actions within the business plan.

The period (at least three years) under which solvency cover is projected and assessed aligns with the strategic planning process. The planning process considers the key financial and capital metrics over the period. To aid this assessment the plan is stressed for risks that Vhi Insurance is or could be exposed to. A number of stresses and scenarios are developed to test the planning process and to determine the potential impacts on capital requirements and solvency cover. The stresses and scenarios selected cover the material risks (insurance, market, credit, liquidity and operational risks) which Vhi Insurance is or could be exposed to and are designed to be plausible and sufficiently challenging in order to provide a sound basis upon which to assess the overall solvency needs of Vhi Insurance.

Vhi Insurance uses the Standard Formula to calculate the amount of capital Vhi Insurance must hold under Solvency II regulations. This is referred to as the Solvency Capital Requirement (SCR). As part of the ORSA process, Vhi Insurance evaluates the risk profile of its business and tests the appropriateness of the Standard Formula for the business. The assessment carried out in 2020 indicated that the Standard Formula continues to be appropriate for Vhi Insurance.

The ORSA process comprises annual and recurring activities undertaken over the year which informs decisions on strategy, growth, risk control and capital. The activities are:

Annual Activities	Recurring Activities
<ul style="list-style-type: none"> • Business planning • Risk appetite review • Stress and scenario testing • Risk policies review 	<ul style="list-style-type: none"> • Financial reporting • Capital projections • Risk assessment

The key components of the ORSA process are:

Risk Identification	Material risks are identified and informed by risk assessments conducted by business units and risks assessed as part of the strategic planning processes. This includes the consideration of emerging risks and trends.
Risk Assessment and Aggregation	Risk is considered on a forward looking basis to determine the capital requirements and solvency, informed by stress and scenario testing.
Results	The results highlight the appropriateness of solvency cover, resilience of capital to stress tests and adequacy of capital to meet risk appetite requirements. They provide insights to focus mitigation and contingency planning.
Report	The final output, the ORSA Report, documents the risk and solvency assessment and includes a prospective assessment of the solvency position.

The outcome of the process determines the adequacy of capital to continue to meet regulatory capital requirements and Vhi Insurance's capital and risk appetite requirements over the period. It assists the Board and management in making decisions relating to strategy and planning, risk appetite changes, capital management and funding plans. Additionally, it informs management actions on growth, product development and pricing.

The ORSA process requires the engagement and participation of a wide group of stakeholders including the Board, management and, in particular, the Finance, Actuarial, Strategy and Risk Management functions. Risk, capital and planning activities, performed by these functions, link the strategic management process with the decision making processes. In particular, the Board take an active part in directing the ORSA process including how the assessment is performed, challenging the results and recommending plans based on the results and conclusions from the ORSA process. The Board's review and challenge of the ORSA aims to ensure that a robust assessment of material risks facing Vhi Insurance has been performed. This review also seeks to ensure risks that would threaten Vhi Insurance's business model, financial performance and solvency have been appropriately accounted for and Vhi Insurance can meet its obligations and liabilities over the period of the assessment.

An ORSA report is produced on an annual basis, where there is a significant change in the risk profile of Vhi Insurance or for significant strategic decisions that require Board approval. The CRO is responsible for the oversight and implementation of the ORSA process. Following Board approval of the annual ORSA Report, it is submitted to the Central Bank.

B.4 Internal Control System

The Internal Control System within Vhi Insurance is designed to provide reasonable assurance regarding the achievement of business objectives. An effective internal control system increases the effectiveness and efficiency of operations, the reliability, completeness and accuracy of financial and non-financial data for reporting and aims to ensure compliance with legal and regulatory obligations. It can provide only reasonable, not absolute, assurance.

The Board is ultimately responsible for ensuring that adequate and effective internal controls exist within Vhi Insurance. However, responsibility for management of this is devolved to board sub-committees and executive management which is responsible for establishing and maintaining adequate internal control.

For consistency internal control principles are set at a group level and apply group-wide in line with the Board Internal Control Policy. The recommendations of the following have been taken into account in establishing the systems of internal control:

- The Central Bank's Corporate Governance Requirements for Insurance Undertakings.
- The Internal Control - Integrated Framework issued by the Committee of Sponsoring Organizations of the Treadway Commission (COSO).
- Solvency II.
- The relevant provisions of the Code of Practice for the Governance of State Bodies.

B.4.1 The Three Lines of Defence

Vhi Insurance operates the 'Three Lines of Defence' model which is used to structure roles and responsibilities for risk and control activity, including risk governance and risk based decisions-making within the business.

The Three Lines of Defence

1st Line of Defence

The 1st line of defence incorporates all of the business functions which carry out the day-to-day operations of Vhi Insurance. 1st line activities require employees to operate in accordance with and adhere to policies and frameworks, to identify, manage and own risks and controls.

2nd Line of Defence

The 2nd line of defence develops, maintains and implements control policies and frameworks across Vhi Insurance, undertakes monitoring of front line business operations along with advising, supporting and challenging the 1st line of defence. The Risk Management and Compliance functions are part of the 2nd Line of Defence.

3rd Line of Defence

The 3rd line of defence undertakes independent monitoring and assurance activities. The Internal Audit Function and external auditors provide the Board and management with independent objective assurance that the policies, various frameworks and controls in place are appropriate, proportionate and adequately adhered to across the group in the 1st and 2nd lines of defence.

Oversight

Although the Board, board sub-committees and the executive committees are not considered to be among the three "lines" in this model, they are the primary stakeholders served by the "lines," and they are the parties best positioned to help ensure that the three lines of defence model is reflected in Vhi Insurance's risk management and control processes. They do this by overseeing the management of risk, the internal control system, setting policy and monitoring the performance of the key control functions, internal audit and any external assurance providers.

B.4.2 The Internal Control Framework

The Internal Control Policy sets out the principles, expectations, philosophy and framework of internal control within the Vhi group for all staff. The policy is intended to support the implementation and maintenance of a transparent and effective internal control system, underscored by accountability, sufficient in terms of the group's business scale and complexity and facilitating the accomplishment of the group's business goals. The Internal Control Framework of Vhi Insurance has five key elements, in line with the COSO internal control principles.

Components of the Internal Control Framework

1. The Control Environment

The control environment is defined by and reflects organisational culture. It provides the foundation for all other components of internal control and has a pervasive influence on all decisions and activities throughout Vhi Insurance. It is the general attitude and behaviour towards internal control as set by the Board and executive management which influences the consciousness of Vhi staff.

2. Risk Assessment

Risk assessment is the identification and analysis of the risks that Vhi Insurance is exposed to in pursuit of its business objectives. It forms a basis for determining how the identified risks should be managed. Once risks have been assessed a determination can be made on the scale and nature of the internal controls that are required to prevent, detect or mitigate these risks.

The aim is not necessarily to try and avoid risk but to be risk aware and to make risk-conscious decisions, understanding where risks are being taken and how much risk is regarded as acceptable in the pursuit of business objectives.

3. Control Activities

Control activities are the actions or process steps that help to ensure that management objectives are carried out in a risk-conscious manner. They are tools, both manual and automated which can prevent or reduce risk and encompass many activities such as approval and authorisation, reconciliations and segregation of duties, supervision, business continuity, back up and disaster recovery.

Management and employees develop and implement control activities that contribute to the mitigation of risks to acceptable levels, in line with the risk appetite of Vhi Insurance. All levels of Vhi Insurance and all functions have responsibility to undertake control activities as part of the internal control system.

4. Monitoring

Monitoring of internal control is an essential process that assesses the quality of internal control performance over time, to ensure controls remain fit for purpose and are functioning as expected. Regular monitoring allows performance expectations to be established and any variances from these can be identified and investigated, possibly providing an early indicator of potential incidents.

Monitoring and reporting are also used to provide the Board and executive management with the relevant information required for informed decision-making. Independent monitoring is undertaken by the 2nd and 3rd line functions on an ongoing basis throughout the year. This includes compliance obligation monitoring, risk assessments, internal audits and reviews by external assurance providers such as the external auditors. This monitoring supplements self-assessment monitoring and testing conducted by functions.

5. Information and Communication

Vhi Insurance recognises that a good system of communication is essential for Vhi Insurance to maintain an effective system of internal control. The communication of relevant information supports decision making and the co-ordination of activities. Relevant information must be identified, captured and communicated within a timeframe, in a manner that enables employees to carry out their duties and responsibilities. The upward dissemination of data from all three lines of defence ensures that the highest levels of the group are provided with a holistic view of the operations of the entire group and companies within it.

Through its internal control system, Vhi Insurance ensures all staff are aware of their role in the system, thereby promoting the importance of performing appropriate internal controls for the sound operation of the business.

B.4.3 How the Compliance Function is implemented

The role of the Compliance Function is to manage the overall compliance risk of Vhi Insurance and to support Vhi Insurance to achieve its strategic objectives and:

- To conduct its business prudently and in accordance with both the letter and the spirit of relevant laws and regulation.
- To ensure compliance with those related internal policies and standards, designed to achieve Vhi Insurance's compliance objectives.
- To act ethically, professionally and with integrity, honestly and fairly in dealing with customers.

The Compliance Function is led by the Head of Compliance (a PCF), is an independent second line of defence assurance provider which reports to the RMCC, and administratively to the Chief Financial Officer. The planned activities of the function are detailed in an annual Compliance Plan which sets out the focus of the function for the coming year. The plan is presented annually to the RMCC, for approval. A review and analysis of Vhi Insurance's compliance profile, along with a status update on progress against the Compliance Plan, are now provided to the RMCC 6 times a year.

The Compliance Function maintains the standards and frameworks for compliance within which Vhi Insurance operates and is responsible for the management of its overall compliance implementation and the compliance governance framework in Vhi Insurance. The compliance framework was reviewed in 2020 in light of experience and to reflect the implementation of a new information repository, monitoring and reporting system for compliance, risk management and governance activity. The key activities of the function include, but are not limited to:

- Management of the compliance universe, including identification and assessment of the impact of any changes in legislation/regulation on Vhi Insurance and co-ordination of the implementation of business changes required.
- Overseeing, investigating and managing the reporting/escalation with the business of any potential or actual breaches of regulation.
- Guiding/overseeing compliance remediation programmes.
- Conducting compliance risk-based monitoring and themed reviews including sales monitoring of Vhi Insurance underwritten products, error and complaint activities and monitoring and reporting on actual or potential compliance breaches.
- Co-ordinating the delivery of responsibilities arising under Vhi Insurance's relationship with regulators and guiding the business and management in this regard.
- Approval of various processes and documentation across product, advertising, marketing, sales and customer terms and conditions, information and literature.
- The provision of compliance advice to business units.
- Development and maintenance of compliance documentation, including compliance policies, the Compliance Manual and procedural documentation related to compliance activities and structures.
- Managing the provision of induction and regulatory/compliance training, education and briefings, providing support to PCFs and supporting management and the Board in the promotion of a compliant and ethical, commercial and customer focused culture.
- Interacting with other key control functions, including in particular Risk Management and Internal Audit.

Vhi Insurance believes the Compliance Function has appropriate standing in Vhi Insurance and has the authority, Independence and capability to undertake its role.

Compliance Function employees are active members of the Association of Compliance Officers of Ireland. In addition, the function is an active player in industry forums and is continually engaged in anticipating and understanding changing regulations, business and customer expectations and requirements.

B.5 Internal Audit Function

B.5.1 How the Internal Audit Function is implemented

The role of the Internal Audit Function is to support the achievement of Vhi Insurance's business objectives, by providing independent assurance on the adequacy and effectiveness of the system of internal control and identifying areas where improvements in efficiency can be made. This role extends to the relevant controls surrounding outsourced service providers and other external parties.

The Internal Audit Function is an independent third line of defence assurance provider which reports functionally to the Audit Committee, and administratively to the Chief Executive. The planned activities of the function are detailed in an annual Internal Audit Plan which sets out the focus of the function for the coming year. The plan is presented annually to the Audit Committee for its approval.

It is the policy of the Board that the Internal Audit Function operates to the best national and international professional standards. In this context, the Internal Audit Function is given the multi-disciplinary resources necessary to effectively discharge its responsibilities. Audit staff must comply with the integrity, objectivity, confidentiality and competency principles contained in the ethical guidelines from the Chartered Institute of Internal Auditors and where appropriate their own various professional associations.

The Internal Audit Function discharges its responsibilities by critically reviewing, on a risk focussed basis:

- The effectiveness and efficiency of the system of internal control;
- The reliability, timeliness and integrity of financial and operating information, and the processes used to identify, measure and report such information;
- Clinical controls relating to Vhi's health provisioning activities;
- Compliance with policies, plans, procedures, laws and regulations;
- The means for safeguarding assets and information, including information stored on computer systems and databases; and
- The adequacy and effectiveness of management actions to address issues identified by both Internal Audit and the external auditors.

As well as the points mentioned above, the Internal Audit Function also evaluates and contributes to the improvement of governance and risk management processes. In carrying out its responsibilities the Internal Audit Function has unrestricted access to all information, explanations, records, assets and staff necessary for audit purposes and is facilitated by management and employees in this regard.

The Internal Audit Function is also responsible for ensuring that audit work takes due account of the potential for fraud and for investigating fraud, either suspected or uncovered, but it should be noted that Internal Audit staff are not expected to have the expertise of any person(s) whose primary responsibility is detecting and investigating fraud.

In meeting its objectives, the Internal Audit Function liaises with the external auditors, external advisors, and the other key functions to ensure that assurance from all internal and external sources is, insofar as possible, managed in an integrated, complementary and cost-effective manner.

The independence of the Internal Audit Function is achieved through:

- the objectivity of internal audit staff;
- the absence of executive responsibility or authority over the activities or operations it reviews and audits;
- the avoidance of conflicts of interest and compliance with the Vhi Conflict of Interest Policy;
- ensuring that internally recruited auditors do not audit activities or functions they previously performed during the timeframe covered by the audit;
- ongoing rotation of audit assignments across the audit team;
- the functional reporting line to the Audit Committee and the administrative reporting line to the Chief Executive;
- attendance at meetings of the Audit Committee, including time alone with the Audit Committee on a yearly basis and otherwise as required;
- regular private meetings with the Chairperson of the Audit Committee;
- attendance at meetings of the RMCC;
- regular private meetings with the Chief Executive; and
- a right of access to the Board Chairman at any time.
- the Head of Internal Audit's Year-end Report to the Audit Committee includes a section concerning the independence of the Head of Internal Audit and the Internal Audit Function.

B.6 Actuarial Function

B.6.1 How the Actuarial Function is implemented

The Actuarial Function supports the business primarily in three broad areas; reserving, capital and pricing. The function is overseen by the Head of Actuarial Function ("HoAF") a PCF who reports administratively to the Chief Financial Officer and is responsible for the management and reporting of actuarial matters to the Board.

The Actuarial Functions responsibilities include, but are not limited to:

- Co-ordination of the calculation of the Technical Provisions, both on a statutory and Solvency II basis. A key component of this process is the determination of the best estimate Outstanding Claims Reserves ("OSCR"), which is calculated using a range of standard actuarial reserving methodologies using both paid and incurred claims data.
- Provision of a formal opinion on the adequacy of the Solvency II Technical Provisions. The Actuarial Opinion on Technical Provisions ("AOTP") is submitted to the regulator annually and the Actuarial Report on Technical Provisions ("ARTP"), which supports the AOTP, is provided to the Board by the HoAF.
- Management of the Board approved Reserving Policy for Vhi Insurance.
- The function prepares and presents an information pack to the Reserving Committee, which meets quarterly to review the Technical Provisions for appropriateness and compliance with the Reserving Policy.
- Management of the Board approved Capital Management Policy and Asset Liability Management Policy for Vhi Insurance. The capital requirements of Vhi Insurance are monitored continuously over the year through a number of processes either owned by the Actuarial Function or with input from the Actuarial Function. It is also responsible for the annual preparation of a Medium Term Capital Plan which makes recommendations regarding capital management.
- Calculation of the Solvency Capital Requirement ("SCR") on a quarterly basis and also on an ad-hoc basis as may be required.

The HoAF also provides the following to the Board annually:

- Actuarial opinion on the ORSA and the overall contribution to risk management.
- Actuarial opinion on the underwriting policy.
- Actuarial opinion on the reinsurance arrangements.

In addition to the provision of an actuarial opinion on the underwriting policy, the Actuarial Function is also responsible for monitoring the experience of the portfolio and making pricing recommendations.

The Actuarial Function activities undertaken throughout the year are presented in the Actuarial Function Report which is submitted to the Board annually.

B.7 Outsourcing

B.7.1 Outsourcing Policy

The Vhi group's Outsourcing Policy, which applies to Vhi Insurance, sets out the principles used to manage internal and external outsourcing across not only Vhi Insurance but also Vhi Healthcare DAC and Vhi Group Services DAC. The policy is intended to support the governance of an effective and ethical outsourcing regime which is sufficient and proportionate in terms of the 3 entities business scale and complexity and complies with regulatory requirements. It recognises that to conduct operations as effectively and efficiently as possible, it may be advantageous to outsource certain functions or activities.

The policy addresses outsourcing responsibilities, the due diligence to be performed, the contractual requirements, risk management requirements, operational supervision and monitoring arrangements and contingency/termination plans to be implemented over outsourcing arrangements. The policy requires the Board to approve the outsourcing of any critical or important operational functions or activities in advance of any contract being signed and for the Board to receive regular updates on the approved arrangements.

B.7.2 Outsourced Functions/Activities

Vhi Insurance, VHI Healthcare DAC & Vhi Group Services outsources some critical or important operational functions or activities to outsourcing provider's external of the Vhi group. Such external outsourced arrangements include:

- Investment management arrangements which are outsourced to professional investment managers in the UK (Vhi Insurance but managed by Vhi Group Services).
- Claims scanning services and claims third party recoveries which are outsourced to providers in Ireland (Vhi Insurance).
- Claims data entry which is outsourced to a provider in the Republic of Mauritius (Vhi Insurance).
- Software testing which is outsourced to a provider in India (Vhi Group Services DAC).

In addition to external outsourcing Vhi Insurance also engages in intra group outsourcing within the Vhi group. Services outsourced to other Vhi group companies include employees for the key functions, Internal Audit, Risk Management, Compliance and Actuarial. Other internally outsourced critical or important operational functions include but are not limited to; Finance, Human Resources, IT, Legal and Secretarial, Marketing and Corporate Communications. All intra group services are carried out in Ireland.

Although not considered outsourcing, Vhi Insurance also has a tied agency agreement in place with Vhi Healthcare DAC, which acts as an insurance intermediary. The agreement allows Vhi Healthcare DAC to sell the insurance company's products to customers on its behalf.

B.8 Any Other Information

There is no additional material information regarding the system of governance that has not been disclosed above.

C. RISK PROFILE



The risk profile of Vhi Insurance includes all risks which could impact on the achievement of Vhi Insurance's objectives, in particular those relating to Capital, Operational, Strategic and People, Conduct & Culture. The main capital and solvency risks are underwriting risk, market risk, counterparty default risk and operational risk. Vhi Insurance also monitors and manages other risks to its business model and strategy.

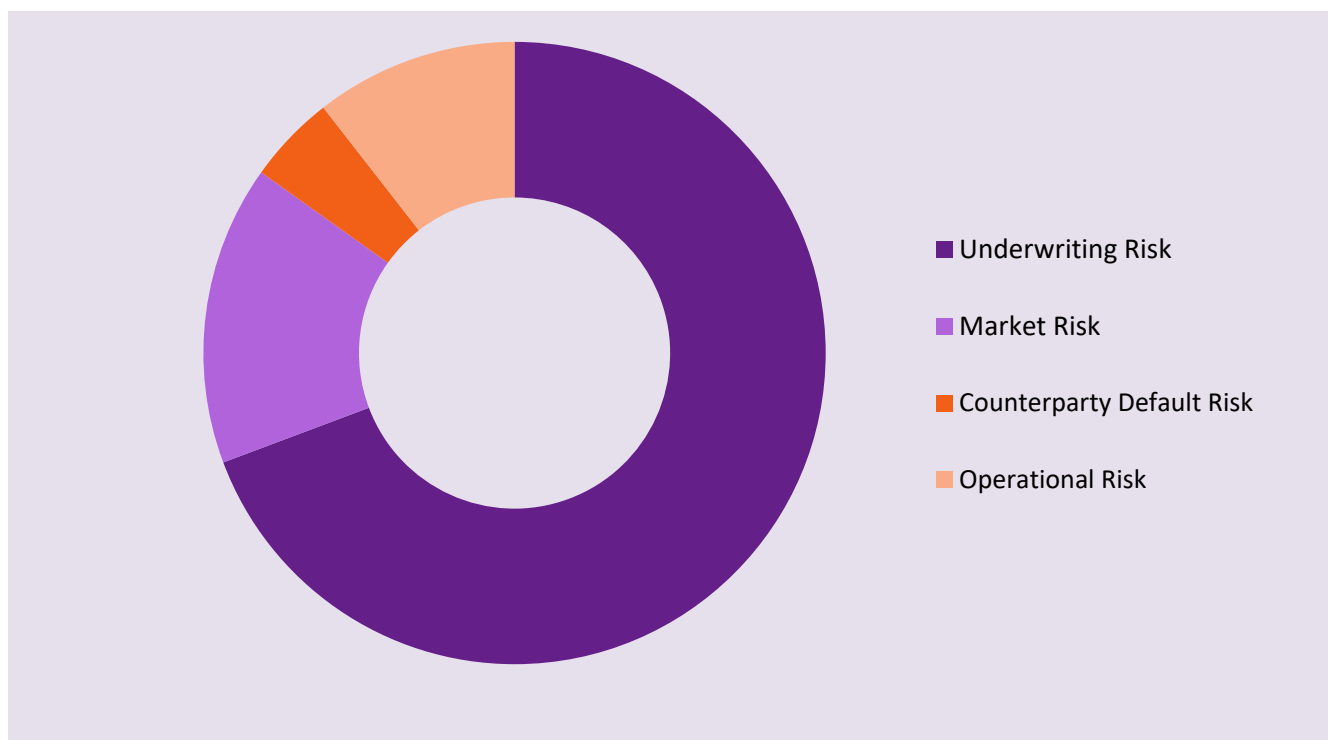
Vhi Insurance considers that the RES in Ireland is only partially effective and requires further enhancement to ensure the industry is focused on healthcare quality and efficiency for customers. Additionally, it should ensure the RES does not place insurers covering a disproportionate share of higher risk and less healthy policyholders at a competitive disadvantage in terms of risk of capital, value and sustainability.

Vhi Insurance actively seeks to be risk aware, understand where risks are being taken and how much risk is regarded as acceptable in the pursuit of business objectives that provide a reasonable opportunity to earn a financial return. Risks are regularly reviewed through the ERM Life Cycle, incorporating the identification, measurement, assessment and reporting of risk to determine whether Vhi Insurance is prepared to accept the risk and to consider the adequacy of planned mitigating actions.

A description of the main risks together with the strategies to mitigate risk is set out in this section.

Risk Exposure

The SCR capital calculation demonstrates the relative exposure to the different components of capital risk. Underwriting and market risk are the main drivers of the SCR. Other components of the SCR include operational risk and counterparty default risk.



+ Further Information

The risk exposure by risk category is detailed in [Section E.2](#) SCR and MCR. The risk sensitivities are discussed in [Section C.7](#).

There are no off-balance sheet positions and no element of risk transferred to special purpose vehicles.

C.1 Underwriting Risk

Underwriting risk is the risk that unexpected variations in frequency, size or timing of claims lead to reductions in financial returns. Factors affecting risk exposure include; macroeconomic trends, medical costs, lapse rates, longevity, morbidity risk, demographics, customer and provider behaviour and technology developments.

The main underwriting risks are:

- Premium and reserve risk – risk of inadequate premiums and/or technical provisions for claims.
- Claims risk – risk of adverse future claims experience.
- Competition and regulation risk – risk of Vhi Insurance being at a competitive disadvantage and risk of adverse regulatory changes.

The costs of COVID-19 treatment have fallen on public health and not on private medical insurers. However, the likelihood of such and similar pandemics is an important risk consideration for our business. Whilst public utilisation of private healthcare facilities has kept claims low there are increased underwriting risks due to higher uncertainty. These risks include the incidence of pent up demand, disruption to claims development, costs of long-COVID and uncertainty over future treatment costs as healthcare facilities have to accommodate new infection control procedures.

Vhi Insurance gross written premium increased to €1,536,556k for 2020 from €1,448,511k in 2019 reflecting an increase in membership and a price increase in 2020. The higher premium volume is the main underlying cause of an increase in the health underwriting risk component of the SCR from €279,374k as at 31 December 2019 to €282,616k as at 31 December 2020. Vhi Insurance's reinsurance contract expired at the end of 2017 and is now in run-off.

Vhi Insurance assesses its underwriting risk using analysis of business mix and product profitability, pricing and reserving analysis, and stress and scenario testing, the results of which can be seen in [section C.7](#).

Risk Mitigation

Vhi Insurance use the following risk mitigation techniques to ensure underwriting risk is in line with Vhi Insurance's overall risk profile:

- Pricing appropriate to the level of risk underwritten and in line with community rating requirements.
- Reserving control, with effective claims management to reduce exposure to large claims.

The Board has responsibility for monitoring the effectiveness of these risk mitigation techniques and in doing so relies on reasonable assurance provided by:

- The Risk Management Function, which provides support and independent challenge to business units on the completeness, accuracy and consistency of risk self-assessments, reporting on adherence and compliance with risk appetite together with the outcome of the risk assessment process, which considers risk selection, pricing, claims management, reserving and related risks (credit risk, liquidity risk) quarterly.
- The Actuarial Function, which proposes the optimum reinsurance solution for Vhi Insurance and the adequacy of its reinsurance arrangements given the current and future business plans.

Risk Concentration

- Product concentration is monitored and reported regularly with mitigating actions taken on product design, as appropriate.
- Concentration of risk is not high given the scale of Vhi Insurance's portfolio. Vhi Insurance does underwrite large group arrangements, however there is a degree of profit divergence by plan.

C.2 Market Risk

Market risk is the risk of gains or losses in the value of the financial assets Vhi Insurance holds arising from changes in market prices. In pursuit of its growth objectives, Vhi Insurance seeks some level of market risk as part of its investment strategy, however it does so on the basis that it does not introduce any significant solvency risk.

The main market risks are:

- Interest rate risk – risk of change in assets and liabilities caused by fluctuations in interest rates.
- Spread risk – risk of change caused by fluctuations in the level or the volatility of credit spreads.
- Equity risk – risk of adverse movements in equity prices.
- Concentration risk – risk of amplified losses that may occur from having a large portion of Vhi Insurance's holdings in a particular investment, asset class or market segment relative to Vhi Insurance's overall portfolio.
- Property risk – risk of adverse movements in property prices.

Vhi Insurance has an Investment Policy in place which is reviewed annually by the Investment Committee. All Investments made by Vhi Insurance must adhere to the Investment Policy which is written in line with the Prudent Person Principle as required under Solvency II regulations. Vhi Insurance assesses its market risk by periodically reviewing its investment strategy, by regularly reviewing the performance of its investment managers' and by conducting stress and scenario testing, - the results of which can be found in [section C.7](#).

Market risk is affected by the pandemic due to uncertainty and volatility in financial markets, central bank actions and economic disruption (in particular the ability of companies to support corporate bonds).

Vhi Insurance had total Solvency II investment assets of €1,221,572m as at 31 December 2020 (2019: €1,059,053k). The market risk component of the SCR was €62,547k as at 31 December 2020 (2019: €62,784k).

Market risk component has decreased slightly over the period due to minor changes in Vhi Insurance's asset mix.

Risk Mitigation

To control its market risk, Vhi Insurance agrees an investment mandate with each investment manager it appoints that sets guidelines, including limits and restrictions, on the investments that they may make on its behalf. Vhi Insurance regularly monitors compliance with these guidelines. Vhi Insurance mitigates excessive interest rate risk by adopting asset and liability matching criteria and setting maximum limits. It also carries out periodic stress testing, the results of which can be found in [section C.7](#).

The Board has responsibility for monitoring the effectiveness of these risk mitigation techniques and in doing so relies on reasonable assurance provided by:

- Its Investment sub-committee that oversees the management of the investment portfolio and ensures that it is being managed in accordance with the investment policy, the investment mandate, any solvency requirements or other risk considerations. This includes reviewing the performance of the investment managers.
- The investment managers, who present to the, Investment Committee, and the Finance and Risk Management Functions on performance, market and economic issues and risks.
- The Finance Function, which monitors the investment mandate and investment managers.
- The Risk Management Function, which provides support and independent challenge to business units.

Risk Concentration

- Interest rate risk arises primarily from Vhi Insurance's investment portfolio, which is almost wholly invested in fixed rate corporate and government bonds. As Vhi Insurance's health insurance claims are typically settled within six months, there is limited interest rate risk arising from the insurance liabilities.
- There is no material concentration of interest rate risk from any one investment.

- Market price risk arises from fluctuations in the value of financial instruments as a result of changes in market prices and the risks inherent in investments. There is no material concentration of price risk.

Application of the Prudent Person Principle

Vhi Insurance invests in assets in accordance with the Prudent Person Principle as set out in Regulation 141 of the *European Union (Insurance and Reinsurance) Regulations 2015*. The investment strategy aims to ensure that assets are invested in a manner appropriate to the nature and duration of the insurance liabilities and to ensure the security, quality, liquidity and profitability of the investment portfolio as a whole and that the invested assets are held in locations which ensure their availability. All assets are invested in the best interests of policyholders.

The portfolio consists of assets managed by outsourced investment managers and short-term bank deposit and money-market investments managed within the Vhi group. The outsourced investment managers must manage assets within parameters as agreed between Vhi Insurance and each manager in the investment mandate. Similarly, the internally managed short-term investments are managed within parameters approved by the Board.

The investment mandate agreed with each manager contains specific restrictions to ensure that Vhi Insurance only invests in assets that have risks that it can properly identify, measure, monitor, manage, control and report on and take into account in the calculation of the SCR. The parameters in the mandate ensure that the portfolio is appropriately diversified in such a way that avoids excessive reliance on any particular asset, issuer, geographical area or accumulation of risk in the portfolio as a whole. The parameters are aligned with the Board's Risk Appetite Statement and business strategy and are set independently of third parties, such as financial institutions, asset managers and rating agencies.

Vhi Insurance only invests in derivatives where they reduce the risks to which it is exposed. Investments in assets that are not admitted to trading on a regulated financial market are kept to prudent levels.

C.3 Credit Risk

Credit risk is the risk of a change in the value of assets and liabilities caused by an unexpected default or deterioration in the credit rating of counterparties and debtors. Debtors include policyholders (where premiums are overdue), corporate policyholders, reinsurers and other third parties. Factors affecting risk exposure include; volatility of asset prices, volatility of liabilities and economic contraction where default rates are elevated or the ability of individuals to pay premiums is impacted. The global pandemic impacted economic conditions negatively in the early part of the year but, due to the actions of the European Central Bank and other such authorities, this credit risk exposure has since reduced from what may have been expected at the outset. The main credit risk is Counterparty default risk.

Vhi Insurance's gross written premium increased to €1,536,556k for 2020 from €1,448,511k in 2019 reflecting higher membership and the impact of price adjustments during late 2019. The counterparty default risk component of the SCR decreased from €18,776k as at 31 December 2019 to €9,680k as at 31 December 2020 due to refinements in the assessment resulting in improved accuracy.

Methods of risk assessment include measuring and monitoring credit risk exposure (including monitoring debtor days and debtor values) and the credit ratings of counterparties. Vhi Insurance also undertakes stress and scenario testing, the results of which are shown in [section C.7](#).

Risk Mitigation

Vhi Insurance's investment mandate is limited by restrictions aligned to Vhi Insurance's Risk Appetite. Vhi Insurance monitors the appropriateness of credit ratings applied to its portfolio of assets. Vhi Insurance also monitors arrears with a view to ceasing cover if premiums are not paid within specific timelines.

The Board has responsibility for monitoring the effectiveness of these risk mitigation techniques and in doing so relies on reasonable assurance provided by:

- The Investment Committee, which engages with the investment manager to oversee the credit quality of the investment portfolio. This includes reviewing the performance of the investment manager.
- The Finance Function, which monitors the investment mandate and investment managers.
- The Risk Management Function, which provides support and independent challenge to business units on the completeness, accuracy and consistency of risk self-assessments, reporting on adherence and compliance with its risk appetite and policy management frameworks.
- The Credit Management team which monitors and reports on debtor days and debtor values.
- The Finance Function which monitor premium bookings and receipts and report against credit management targets.

Risk Concentration

There is no material concentration of credit risk, with Vhi Insurance exposure managed through limits and diversification requirements in Vhi Insurance's investment mandate aligned to risk appetite for credit control and asset credit ratings.

C.4 Liquidity Risk

Liquidity risk is the risk that Vhi Insurance will not have available funds to meet its obligations as they fall due. This could result in the forced early realisation of assets causing Vhi Insurance a financial cost. Factors affecting risk exposure include net cash flows, investment strategy, credit cycles, external effects on the level of interest rates and other penalties charged on early realisation of assets. The main liquidity risk faced by Vhi Insurance is having insufficient liquid or realisable assets to meet liabilities as they fall due over the short or medium term. Vhi Insurance held €15,172k in cash and short-term deposits as at 31 December 2020 (2019: €17,157k), with an additional €200,038k (2019: €111,980k) available in money market funds.

The total amount of the expected profit included in future premiums is detailed in the appendix in [QRT S.23.01.01](#).

There has been no material change to Vhi Insurance's liquidity risk exposure and associated control framework with diversification limits on banks, exposure limits to non-EU banks together with credit rating restrictions.

Vhi Insurance assesses its liquidity risk through monitoring of short term and medium term liquidity. Vhi Insurance also monitors projected and actual cash flows, and undertakes stress and scenario testing.

Risk Mitigation

Vhi Insurance maintains access to liquidity through its investment strategy, which sets limits for investment in high quality and liquid assets to ensure portfolio liquidity, and sets minimum limits for the maturity of its investments to ensure liabilities can be met as they arise by matching cash flows from maturing assets. Vhi Insurance also monitors and projects cash flows arising from premiums, claims and other sources and, together with its investment managers, prepares plans to realise cash flows from its portfolio assets to meet any other shortfalls as they arise.

The Board has responsibility for monitoring the effectiveness of these risk mitigation techniques and in doing so relies on reasonable assurance provided by:

- The Investment Committee, which engages with the investment manager to oversee the management of Vhi Insurance's funds.
- The Finance Function, which provides cash flow projections to the investment managers, monitors the investment managers' performance and, seeks to ensure investments are being managed in accordance with the investment mandate, solvency requirements and other risk considerations.

Risk Concentration

Vhi Insurance's liabilities arise from health insurance claims, which are by nature high in volume and comparatively low in value. Accordingly, the concentration of risk is very low.

C.5 Operational Risk

Operational risk is the risk of loss resulting from inadequate or failed internal processes, people or systems or from external events. Operational risk is inherent in all business units and can have many impacts, including but not limited to, unexpected losses, reputational damage due to negative publicity, legal, regulatory and compliance risks. The operational risk component of the SCR was €45,302k as at 31 December 2020 (2019: €42,480k).

COVID-19 was a significant business disruption risk event resulting in remote working for most staff and more fundamental changes for our front line medical staff. Whilst the business has adapted to these circumstances there remain changes to the nature of some of our operational risks such as business disruption and system failure recovery.

Whilst there has been some increase in the overall level of Vhi Insurance's operational risk component, the nature of the risk has not changed significantly and Vhi Insurance believes cyber-attack and system implementation are risk areas that continue to merit attention. As a result Vhi Insurance continues to implement plans to address potential risk increases in these areas.

Vhi Insurance monitor incidents and near misses in relation to all operational risks. Vhi Insurance assesses the adequacy and effectiveness of controls in place to provide assurances regarding the effectiveness of the operating environment and business continuity plans and undertake stress and scenario testing.

Risk Mitigation

Vhi Insurance maintains an effective control environment which includes controls on IT security, data protection and third party supplier contracts and have implemented a limits framework that is aligned to the risk appetite of Vhi Insurance.

The Board has responsibility for monitoring the effectiveness of these risk mitigation techniques and in doing so relies on reasonable assurance provided by the Risk Management Function. The Risk Management Function monitors and supports operational risk management activities, providing policies, guidance and independent challenge to business units on the completeness, accuracy and consistency of operational risk assessments and controls, reporting on adherence and compliance with risk appetite and company risk policies.

Risk Concentration

Before the pandemic most Vhi Insurance operations were carried out in Dublin and Kilkenny. Having two sites and the move to remote working for most staff required during the pandemic mitigates concentration of operational risk. There is minimal risk concentration in operational risk.

C.6 Other Material Risks

Strategic risk including specific regulation risk

This risk relates to Vhi Insurance's ability to meet its long term plan and achieve its goals. Factors affecting strategic risk exposure include Vhi Insurance's internal processes and systems as well as the macro-economic environment that could alter Vhi Insurance's ability to meet these strategic targets. This includes the risk of loss due to an inadequate community rating system as Vhi Insurance, in operation from 1957, has a disproportionate share of higher risk customers in the PMI market. Vhi Insurance believes that the RES in Ireland remains only partially effective and places insurers covering a disproportionate share of higher risk and less healthy policyholders at a competitive disadvantage. Changes in RES requires the approval of the EU Commission, with a new scheme set to come into operation in 2022. In 2020, the global pandemic increased short term strategic risk for many parts of the economy including Vhi's business. We anticipate the economic impact of COVID-19 to continue beyond the disruption of the pandemic itself (for example the extensive government support has to be paid for). There is a continuing risk that changes in public health provision as well as regulations and political developments could reduce access to private healthcare. This, with the risks of economic contraction and higher healthcare costs, present threats to the attractiveness and affordability of PMI and the size of the market.

People, conduct and culture risk

This risk relates to the risk of damage to the Vhi brand and loss of customers, the risk of detriment to customers and impairment to Vhi Insurance's business model, reputation and financial condition and the risk that Vhi Insurance's actions adversely affect its customers. Culture is managed actively by the EMT and monitored by the Risk Management Function.

The disruption to health services in public and private hospitals and the travel industry brought about by COVID-19 affected the value of our health and travel insurance propositions. Vhi Staff had to adapt quickly to the changes to work settings and procedures introduced by the pandemic.

Risk Mitigation

Strategic risk including specific regulation risk

Vhi Insurance conduct regular reviews of strategy, business plans and the performance of the underwriting portfolio. Vhi Insurance mitigates this risk through assessing product relevance, differentiated propositions, business mix and pricing. Vhi Insurance focus on sales and relationship management and also managing capital.

Vhi Insurance actively reviews the support offered by risk equalisation to community rating and engages with the relevant regulatory bodies to improve regulation and its impact on healthcare services and long term affordability for consumers. Efforts to improve the effectiveness of risk equalisation are likely to focus on introducing progressively more sophisticated measures of health status. New risk equalisation schemes require periodic approval by the EU Commission such that they are compliant with EU competition law.

Our strategic plans take account of the risks above and other related developments including shifts in the delivery and settings of healthcare caused or accelerated by the pandemic. However, the pandemic has the capability of disrupting our business environment and change programmes.

People, conduct and culture risk

Vhi Insurance is constantly monitoring the Vhi brand and reputation. All media messaging must maintain brand value and build relationships with customers. Vhi Insurance also has in place a compliance monitoring programme and an effective control environment with contingency plans to deal with incidents that may arise.

The Board has responsibility for monitoring the effectiveness of these risk mitigation techniques and in doing so relies on reasonable assurance provided by:

- The EMT, which seeks to ensure these risks are identified and managed across all business units with ownership assigned at executive level.
- The ERC, which fosters a culture of transparency and accountability.
- The Risk Management Function/CRO, who has oversight responsibility in ensuring that adequate capital is held for the risk profile of Vhi Insurance.

- The Risk Management Function, which provides support and independent challenge to business units on the completeness, accuracy and consistency of risk self-assessments, reporting on adherence and compliance with its risk appetite and policy management frameworks together with the outcome of the risk assessment process quarterly.

Business units, through Risk Coordinators in each unit, identify, measure and report on risk management, escalating material changes and breaches to the Risk Management function.

Having begun the process of embedding Vhi Insurance's new Corporate Culture and Values in 2018, the business continued to undertake activities in 2020, led by the HR Function, to further establish our culture and values. Vhi also took a number of steps throughout 2020 to ensure customers were treated fairly and we were clear and timely in our communications. We continue to monitor these risk as the pandemic situation evolves and undertake measures to ensure we keep customers at the heart of our business.

We continue to manage risks to staff safety and wellbeing as a priority as we manage the business through the phases of the pandemic and move to changed ways of working in its aftermath. Active communications throughout the business continues to be an important risk mitigant particularly when there is heightened uncertainty about the pandemic.

Risk Concentration

- **Strategic including specific regulation risk:** Vhi Insurance's operations are based in Ireland, therefore, Vhi Insurance is exposed to macroeconomic conditions in Ireland and turbulence in the wider Eurozone and global economy. A deterioration in the effectiveness of the RES impacts value and profit concentrations, increasing Vhi Insurance's exposure to business mix risk.
- **People, Conduct and Culture Risk:** The culture of an organisation relates to the way its staff operate, in general. There are variations and exceptions but Vhi Insurance particularly focuses on the manner in which things are done by the majority of staff given that behaviours can spread and become commonplace throughout organisations.

Risk Sensitivity

Assessments utilising expertise across the business are used to agree relevant stresses for the components of the material risks, and to assess and validate impacts as well as controls and agreed management actions. This enables Vhi Insurance to quantify the solvency impact potential of risks using suitable scenarios that are plausible, sufficiently challenging and provide a sound basis upon which to assess solvency for each material risk.

The main assumptions underlying the stress tests and scenario analysis are consistent with those used in the business and financial planning processes. The management actions are a key assumption in scenario testing as these are critical in containing the impact of the incidents modelled. Vhi Insurance ensures the management actions are validated by the relevant decision makers and consistent with Vhi Insurance's Recovery Plan in the ORSA process. In assessing solvency impact Vhi Insurance look over the planning horizon and allow for the delay in the impact of rectifying management actions so that Vhi Insurance understand the timing of the most adverse impacts.

C.7 Any Other Information

Stress / Scenario	
Underwriting Risk	<ul style="list-style-type: none"> Economic downturn Regulatory Change Claims surge Impact of pandemic on claims
Market Risk	<ul style="list-style-type: none"> Equity risk Spread risk Interest rate risk Property risk Concentration risk
Credit Risk	<ul style="list-style-type: none"> Counterparty default risk
Liquidity Risk	<ul style="list-style-type: none"> Equity risk Spread risk Interest rate risk
Operational Risk	<ul style="list-style-type: none"> Cyber Risk
Other Material Risks	<ul style="list-style-type: none"> Strategic, Value Growth, Specific Regulation, and Reputation Risks: Vhi Insurance stresses a number of risks including litigation, regulations affecting Vhi Insurance's markets, competition, risk equalisation and market disruption.

Stress tests are used to understand the sensitivity of the capital cover to material risks. Vhi Insurance calculates these for a range of risks in deriving and testing solvency cover. Vhi Insurance also performs more detailed scenario projections to allow better understanding of the impact of shocks and the management actions required to mitigate risk. High impact / low likelihood stress tests of this nature are used in the ORSA process to test the resilience of capital buffers.

The ORSA considers a range of scenarios and the main scenarios for risks in this document are included below. The impact of the specific scenarios developed for the most recent ORSA are summarised below and are all based on the Standard Formula parameters:

Risk		Method description	Change in Solvency Cover as a %*	Change in Solvency Capital Requirement (€000s)
Market and Liquidity Risk Sensitivities	Concentration Risk	<ul style="list-style-type: none"> Stress reflecting risk that arises from large investment in individual counterparties and single name exposures. 	-2%	6,577
	Interest Rate Risk	<ul style="list-style-type: none"> Stress reflecting changes in the level of the basic risk free interest rates is captured. 	-6%	19,373
	Spread Risk	<ul style="list-style-type: none"> Stress reflecting sensitivity of the value of assets and liabilities to changes in the level or in the volatility of credit spreads over the risk-free interest rate term structure. 	-17%	55,743
	Property Risk	<ul style="list-style-type: none"> Stress reflecting risk that arises as a result of sensitivity of assets, liabilities 	-4%	13,137

	Equity Risk	<ul style="list-style-type: none"> and financial investments to the level or volatility of market prices of property. Stress reflecting risk that the value of an asset or liability will change due to fluctuations in the level or volatility of the market prices for equities. 	0%	0
Credit Risk Sensitivities	Counterparty default risk	<ul style="list-style-type: none"> Stress to reflect possible losses due to unexpected default, or deterioration in the credit standing, of the counterparties and debtors of insurance and reinsurance undertakings. 	-4%	13,702
ORSA Scenarios	Underwriting	<ul style="list-style-type: none"> Stress test where claims increases materially both on a one off and recurring basis due to COVID-19. 	-32%	-2,029
	Underwriting	<ul style="list-style-type: none"> Stress test where business mix changes adversely. 	-12%	-26,558
	Underwriting	<ul style="list-style-type: none"> Stress test where regulatory conditions adversely change. 	-43%	4,034
	Underwriting	<ul style="list-style-type: none"> Stress test where claims decrease materially due to COVID-19 	1%	-31,876
	Underwriting	<ul style="list-style-type: none"> Economic downturn due to pandemic recession. 	-24%	-17,320
	Underwriting and Market	<ul style="list-style-type: none"> Economic downturn with customer and revenue and investment losses. 	-25%	-6,514
	Operational	<ul style="list-style-type: none"> Stress test under a cyber-attack scenario. 	-21%	-3,426

* Change in Solvency Cover as a percentage reflects the impact on both Solvency Capital Requirement and Own Funds, Vhi's regulatory capital

Stress and scenario testing in the ORSA validates Vhi Insurance's SCR assessment and additional capital buffers and capital risk appetite as well as guiding the development of Vhi Insurance's business and risk management plans. Under each of the ORSA scenarios tested, Vhi Insurance continues to have adequate capital buffers over the business planning period after implementing considered management actions. Management actions include the possibility of increasing prices.

Vhi Insurance also conducts reverse stress testing which starts at the point of failure of Vhi Insurance's business models and aims to identify a scenario that may result in such a failure.

Vhi Insurance assesses likelihoods and the co-incidence of these material risks when using stress and scenario testing to quantify them in the ORSA but there are limitations to the available data and reliability of any such assessments. It allows for this in considering its target capital margins.

There is no additional material information regarding the risk profile of Vhi insurance that has not been disclosed above.

D. VALUATION FOR SOLVENCY PURPOSES



D.1 Assets

This section has been completed in the order of how the assets appear on QRT [S.02.01.02 Balance Sheet](#).

Vhi Insurance DAC Solvency II Balance Sheet Extract*	Notes	Solvency II Value 2020 €'000	Statutory Accounts** 2020 €'000
Assets			
Deferred acquisition costs	1	-	37,584
Pension benefit surplus		88	88
Property, plant & equipment held for own use	2	12,928	12,928
Investments			
Property (other than for own use)		34,294	34,294
Equities		0	0
Government Bonds		296,323	296,323
Corporate Bonds		618,736	618,736
Collateralised securities		-	-
Collective Investments Undertakings		270,677	270,677
Derivatives***		445	445
Deposits other than cash equivalents		1,098	1,098
Total Investments	3	1,221,572	1,221,572
Reinsurance recoverable from non-life and health similar to non-life	4	170	12,466
Deferred Tax		-	473
Insurance and intermediaries receivables	5	128,193	686,845
Reinsurance receivables	4	-	-
Cash and cash equivalents	3	15,172	15,172
Any other assets, not elsewhere shown	6	2,458	142,071
Total Assets		1,380,582	2,129,200

*Please note there may be minor differences to the information included in the Appendix due to rounding.

** The statutory accounts figures shown have been reclassified to match prescribed SOL II Balance Sheet headings.

*** Vhi Insurance uses forward rate contracts to hedge against foreign exchange rate movements. It also uses interest rate futures to hedge against interest rate movements.

Note 1: Deferred Acquisition Costs

The costs incurred during the financial year that are directly attributable to the acquisition of new business are expensed in the same accounting period as the premiums to which they relate are earned.

Under Solvency II, deferred acquisition costs are included in the calculation of the premium provision.

Asset	Solvency II Value	Statutory Accounts	Difference
	2020	2020	2020
	€'000	€'000	€'000
Deferred acquisition costs	0	37,584	37,584

Note 2: Property Plant and Equipment Held For Own Use

Property, plant and equipment held for own use is a combination of 'Tangible assets' and 'Land and buildings' in the statutory accounts.

Asset	Solvency II Value	Statutory Accounts	Difference
	2020	2020	2020
	€'000	€'000	€'000
Tangible Assets	6,587	6,587	-
Property - held for own use	6,341	6,341	-
Property, plant & equipment held for own use	12,928	12,928	-

Tangible Assets

For the statutory accounts, tangible assets are stated at cost less accumulated depreciation and impairment. Depreciation is calculated so as to write off the cost of the assets over their estimated useful lives on a straight line basis.

Under Solvency II, tangible assets are valued at cost less accumulated depreciation and impairments, which is held to approximate to fair value.

Property

Property is valued annually on an open market value basis. Valuations are made by independent professionally qualified valuers with recent experience in the location and class of the properties held. These valuations are based on recent market prices adjusted to reflect the condition and location of the specific properties. Valuations are carried out as close as possible to each year end.

Most property held is shared by Vhi Insurance with other Vhi group companies. The property value is split between *Property - held for own use* and *Property - other than for own use* based on the occupation ratio of the buildings by employees of Vhi Insurance and employees of other Vhi group companies.

Asset	Solvency II Value	Statutory Accounts	Difference
	2020	2020	2020
	€'000	€'000	€'000
Property - held for own use	6,341	6,341	-
Property - other than for own use	34,294	34,294	-
Total Property	40,635	40,635	-

Note 3: Investments and Cash

In line with the statutory accounts, investment assets under Solvency II are held at fair value. Fair value is determined as the market value which represents the bid price inclusive of any accrued interest at the balance sheet date.

Where available, market prices are determined by reference to publically available prices of identical assets in active markets. Vhi Insurance considers a market active in which transactions for the asset or liability take place with sufficient frequency and volume to provide pricing information to market participants on an ongoing basis. Where actual market prices are not publically available, valuations are calculated by valuation services with access to private market information. Where prices for identical assets are not available, valuations are calculated by reference to prices for similar assets trading on active markets with appropriate adjustments for differences between the assets.

If the market for the asset is not active and recent transactions of an identical asset on their own are not a good estimate of fair value, the fair value is estimated by using a valuation technique. The objective of using a valuation technique is to estimate what the transaction price would have been on the measurement date in an arm's length exchange motivated by normal business considerations.

At 31 December 2020, all assets included in the categories of Government Bonds, Corporate Bonds and Collateralised Securities:

- were considered to be trading in active markets as prices were available to market participants; and/or
- were valued by valuation services using quoted prices for identical or similar assets; and
- were subject to minimal valuation uncertainty.

Collective investments undertakings are composed of money market funds with constant or variable net asset values whose value is derived from the market value of the underlying assets held. Such funds are valued by the fund manager and considered to be at risk of minimal valuation uncertainty.

+ Further Information [Section D.4. Alternative Methods for Valuation](#) discusses the valuation of unlisted equities.

Bank deposits are carried at face value plus or minus any accrued interest at the balance sheet date. The directors believe that this value does not need to be further adjusted under Solvency II as all accounts mature within one year.

Asset	Solvency II Value	Statutory Accounts	Difference
	2020 €'000	2020 €'000	2020 €'000
Equities - unlisted	0	0	-
Government bonds	296,323	296,323	-
Corporate bonds	618,736	618,736	-
Collective investments undertakings	270,677	270,677	-
Derivatives	445	445	-
Investment portfolio assets at fair value	1,186,180	1,186,180	-
Deposits other than cash equivalents	1,098	1,098	-
Property (other than for own use)	34,294	34,294	-
Total investment assets	1,221,572	1,221,572	-
Cash and cash equivalents	15,172	15,172	-
Total	1,236,745	1,236,745	-

Note 4: Reinsurance Recoverable and Reinsurance Receivables

Reinsurance recoverable is recognised where Vhi Insurance has purchased reinsurance and expects to be able to recover claims amounts which are outstanding or yet to be incurred under insurance contracts issued.

Premiums retained from the reinsurer until settlement of the underlying claims are recognised as a liability – *deposits from reinsurers*. Vhi Insurance currently retains premiums equal to the recoverable at all times.

Under Solvency II, these amounts are reduced as underlying provision for claims outstanding is lower due to the elimination of prudence.

Asset & Liability	Solvency II Value	Statutory Accounts	Difference
	2020 €'000	2020 €'000	2020 €'000
Asset Reinsurance recoverable from non-life and health similar to non-life	170	12,466	(12,296)
Liability Deposits from reinsurers	(170)	(12,466)	12,296

Reinsurance receivables and Reinsurance payables:

Reinsurance receivables or payables are valued at the expected immediate cash inflow or outflow under reinsurance contracts entered into.

Under Solvency II, reinsurance is recalculated, and as a result of the elimination of prudence from the technical provisions, the expected reinsurance receivable is replaced with an estimate for the eventual payable.

Asset	Solvency II Value 2020 €'000	Statutory Accounts 2020 €'000	Difference 2020 €'000
Reinsurance receivables	0	0	0

Note 5: Insurance and Intermediaries Receivables

Insurance and intermediaries' receivables include amounts receivable from policyholders via intermediaries and related tax relief-at-source and risk equalisation credits for insurance policies inceptioned.

In the statutory accounts, receivables are valued at face value net of an allowance for potential doubtful debts estimated using historical data and regularly tested against experience.

Under Solvency II, cash flows in respect of unexpired insurance coverage are removed and included in the calculation of the premium provision. The cash flows include an amount for the unexpired risk equalisation as well as policyholder debtors. No other valuation adjustment is made as all receivables are receivable within one year.

Asset	Solvency II Value 2020 €'000	Statutory Accounts 2020 €'000	Difference 2020 €'000
Insurance & intermediaries receivables	128,193	686,845	(558,652)

Note 6: Any Other Assets, Not Elsewhere Shown

Other assets consist of deferred expenses under the Risk Equalisation Scheme and prepayments. Deferred risk equalisation expenses are included in the calculation of the premium provision under Solvency II. Prepayments are considered to be valued consistently for Solvency II purposes.

Asset	Solvency II Value 2020 €'000	Statutory Accounts 2020 €'000	Difference 2020 €'000
Any other assets, not elsewhere shown	2,458	142,071	(139,613)

D.2 Technical Provisions

D.2.1 Technical Provisions Methodology and Bases

The main actuarial methodologies used in the calculation of technical provisions are described below. There have been no material changes in the use of these methods during the reporting period.

- Development Factor Method (“DFM”)** A DFM (or otherwise known as basic chain ladder method) assumes that for any particular Accident Period (“AccPeriod”), the proportion of the total ultimate claim costs, which has developed by each period, follows past trends. This method is applied using both paid and incurred claims data.
- Estimated Loss Ratio (“ELR”) Method** For this method, a projected LR is estimated independently of the claims experience to date for that AccPeriod. The ELR method is used for recent AccPeriods which are relatively less developed as DFM’s may not be appropriate given they have relatively less data at these early stages.
- Bornhuetter-Ferguson (“BF”) Method** This method combines features of the DFM and ELR methods, and assigns weights for the percentage of losses paid and losses incurred. Unlike the Chain Ladder Method, which builds a model based on past experience, the Bornhuetter-Ferguson technique builds a model based on the insurer’s exposure to loss. This is most useful for more recent periods, reducing the reliance on less developed claims experience.

In calculating the technical provisions the probability weighted discounted average of all possible future outcomes is considered, this includes an allowance for events not in historic claims data.

The technical provisions include a Provision for Claims Outstanding (“PCO”) which represents the provision for unpaid cashflows relating to claim events prior to the valuation date with respect to expired business. It also includes the Premium Provision (“PP”) which covers all future cashflows associated with future risk which is bound to the business at the valuation date.

The payoff profile for the cashflows projected within the technical provisions is constructed using the historic claim payment trends. These cashflows are discounted using the year end 2020 risk free term structure of interest rates published by the European Insurance and Occupational Pension Authority (“EIOPA”).

+ Further Information [Section D.2.7](#) outlines the calculation of the Risk Margin.

A reinsurance contract was in place until year end 2017 and when calculating the net technical provisions the reinsurer’s proportionate share of future cashflows are allowed for in the technical provisions.

Medical Expense Insurance*	Gross 2020 €’000	Net 2020 €’000
Provision for Claims Outstanding (“PCO”)	280,739	280,568
Premium Provision (“PP”)	83,658	83,658
Risk Margin	23,157	23,157
Total Technical Provisions	387,554	387,383

D.2.2 Level of uncertainty associated with the value of technical provisions

Vhi Insurance underwrites medical expense insurance which is short tailed in nature and under a normal course of business experiences a relatively low degree of volatility. This is recognised in the volatility assumption applied under the Solvency II standard formula guidelines, which is one of the lowest, amongst other non-life business lines.

The impacts of COVID-19 have been, and continue to be, immense. In relation to the calculation of TPs, the pandemic has given rise to significant disruption to claims costs. This has resulted in unprecedented levels of uncertainty at the Valuation Date both in respect of expired and unexpired risk. The largest impact has been the closure of Acute Private Hospitals for three months as mentioned earlier in the report, but the disruption to all claims has continued throughout the year.

D.2.3 Explanation of any material differences between the bases, methods and main assumptions

The technical provisions in the financial statements total €973,007k at 31 December 2020 (2019: €985,284k). This compares to Solvency II technical provisions of €387,554k (2019: €478,610k).

The reasons for the difference are due to different valuation bases for the respective calculations.

The Solvency II Technical Provisions are on a discounted, best estimate basis, allowing for all future cashflows associated with claims and expenses associated with business to which Vhi Insurance is obligated as at 31 December 2020.

The Financial Statements Technical Provisions have been prepared in accordance with FRS 102 and FRS 103. These allow for reasonably foreseeable events and need not be on a best estimate basis.

The differences between the two bases are mainly explained by the allowance for future premium receivable in the Solvency II Technical Provisions, as well as the removal of any margins for prudence and the recognition of surplus within unexpired risk and risk equalisation cashflows.

D.2.4 Matching adjustment, volatility adjustment or transitional measures applied to the technical provisions

Vhi Insurance does not apply:

- a matching adjustment;
- a volatility adjustment;
- transitional interest rate risk free structure; or
- transitional measures.

D.2.5 Description of recoverables from reinsurance contracts

From 2013, Vhi Insurance had a multi-year quota share reinsurance agreement in place. This arrangement expired at the end of 2017 and is currently in run-off from 31 December 2017.

The reinsurance counterparty is the National Indemnity Company, part of the Berkshire Hathaway group (the “Reinsurer”), who have a strong credit rating, AA+ with Standard & Poor’s at 31 December 2020. Under Solvency II this corresponds to a credit quality step of 1. Any reinsurance recoverable is adjusted for expected default of the Reinsurer in line with Article 61 of Delegated Regulation 2015/35/EU.

Vhi Insurance has calculated the reinsurer’s share of cashflows underpinning the Gross Technical Provisions. The Net Technical Provisions have been calculated by deducting the reinsurer’s share of Gross Technical Provisions from the Gross Technical Provisions.

Vhi Insurance does not use special purpose vehicles in relation to reinsurance.

D.2.6 Material changes in the relevant assumptions made in the calculation of technical provisions compared to the previous reporting period

There have been no material changes to the assumptions underlying the technical provisions throughout the year.

D.2.7 Risk Margin

The Solvency II Risk Margin shall be such as to ensure that the value of the technical provisions is equivalent to the amount an insurance and reinsurance undertaking would be expected to require in order to take over and meet the insurance obligations of Vhi Insurance.

This component should be calculated using a cost of capital approach. The cost of capital approach requires the Solvency II Risk Margin to be calculated by determining the cost of providing an amount of eligible own funds equal to the SCR necessary to support the obligations over their lifetime.

In EIOPA's "Guidelines on the Valuation of Technical Provisions" a hierarchy of methods is specified for the estimation of future SCR. Vhi Insurance adopts the top method in this hierarchy, "Method 1".

The cost of capital applied in calculating the Solvency II Risk Margin is 6%. The Solvency II Risk Margin calculated at 31 December 2020 was €23,157k (2019: €22,078k).

D.3 Other Liabilities

This section has been completed in the order of how the liabilities appear on QRT [S.02.01.02 Balance Sheet](#).

Vhi Insurance DAC Solvency II Balance Sheet Extract*	Notes	Solvency II Value	Statutory Accounts**
		2020 €'000	2020 €'000
Other Liabilities			
Provisions Other Than Technical Provisions	10	79,137	79,137
Deposits from reinsurers	4	170	12,466
Deferred tax liabilities	7	9,571	-
Derivatives		407	407
Debts owed to credit institutions		1,724	1,724
Insurance & intermediaries payables	8	100,269	198,176
Resinsurance payable		1,165	225
Any other liabilities, not elsewhere shown	9	78,617	208,613
Total Other liabilities		271,060	500,748

* Please note there may be minor differences to the information included in the Appendix due to rounding.

** The statutory accounts figures shown have been reclassified to match prescribed SOL II Balance Sheet headings.

Note 7: Deferred Tax Liabilities

Vhi Insurance recognises a deferred tax liability and values this under GAAP at its undiscounted face value.

Under Solvency II, this deferred tax liability is increased for the taxable value of the unrealised gain which results from recalculation of the technical provisions without prudence.

Liability	Solvency II Value	Statutory Accounts	Difference
	2020 €'000	2020 €'000	2020 €'000
Deferred tax liabilities	9,571	-	9,571

Note 8: Insurance and Intermediaries Payables

Insurance and intermediaries payables include amounts due to hospitals and doctors for policyholder claims assessed at the balance sheet date and not yet paid, along with amounts due for the Health Insurance Levy to fund the Risk Equalisation Scheme, and commission payable to intermediaries for policies sold.

Under Solvency II, commission payable and risk equalisation scheme creditors which relate to the unexpired portion of in force contracts are included in the calculation of the premium provision. No further adjustment is made to these values as all amounts are expected to settle within one year.

Liability	Solvency II Value	Statutory Accounts	Difference
	2020 €'000	2020 €'000	2020 €'000
Insurance & intermediaries payables	100,269	198,176	(97,907)

Note 9: Any Other Liabilities, Not Elsewhere Shown

Deferred Risk Equalisation Scheme income is included in the calculation of the premium provision under Solvency II but included in Other Creditors in the statutory accounts. Accruals and other payables are valued at the undiscounted face value under GAAP and are considered to be valued consistently under Solvency II.

Liability	Solvency II Value	Statutory Accounts	Difference
	2020	2020	2020
	€'000	€'000	€'000
Any other Liabilities, not elsewhere shown	78,617	208,613	(129,996)

Note 10: Provisions other than technical provisions

During 2020, a provision was created amounting to €77,000k associated with the further return of value to all Vhi private health insurance customers. An announcement was made on the 7th December 2020 of a payment of €75 and €25 to adult and child members, respectively, commencing during January 2021. The remaining balance of €2,137k relates principally to committed Group restructuring costs in accordance with the Vhi Group Strategy and commercial contracts. The valuation of provisions (other than technical provisions) under Solvency II is the same as the statutory accounts.

D.4 Alternative Methods for Valuation

Vhi Insurance uses alternative valuation methods to value assets and liabilities where markets are not active or quoted prices are not available. Maximum possible use has been made of relevant market inputs where available.

D.5 Any Other Information

There is no additional material information regarding the valuation of assets and liabilities for solvency purposes for Vhi Insurance that has not been disclosed above.

E. CAPITAL MANAGEMENT



E.1 Own Funds

Vhi Insurance manages its own funds with the main objective of satisfying solvency requirements in line with Vhi Insurance's Risk Appetite Statement. Vhi Insurance prepares a Medium Term Capital Plan which is updated annually in line with the Board's Capital Management Policy. This includes the projection of own funds over a four year time horizon and aims to ensure that Vhi Insurance continues to hold own funds within the preferred risk appetite range throughout this horizon.

E.1.1 The Structure, Amount and Quality of Own Funds

The below table sets out, separately for each tier, information on the structure, amount and quality of own funds at 31 December 2020 including the eligible amount of own funds to cover the SCR, classified by tiers and the eligible amount of basic own funds to cover the MCR, classified by tiers.

Basic Own Funds for SCR	2020 €'000	2019 €'000
Tier 1	701,968	691,741
Tier 2	-	-
Tier 3	-	-
Total Basic Own Funds	701,968	691,741
Eligible Own Funds for SCR		
Tier 1	701,968	691,741
Tier 2	-	-
Tier 3	-	-
Total Eligible Own Funds for SCR	701,968	691,741
Eligible Own Funds for MCR		
Tier 1	701,968	691,741
Tier 2	-	-
Tier 3	-	-
Total Eligible Own Funds for MCR	701,968	691,741

The slight increase in Tier 1 own funds is due to a combination of a foreseeable dividend of €20,000k and general business performance. Vhi Insurance's Eligible Own Funds for 2020 are reduced by a foreseeable dividend of €20,000k payable to its parent company Vhi Group DAC. Under Solvency II regulations, a regulated entity must disclose a dividend when it deems that it is foreseeable. In light of domestic and EU regulatory recommendations in the context of the COVID-19 pandemic, this was not declared nor distributed in 2020 and deferred to 2021.

The financial statements of Vhi Insurance show equity of €5,000k (2019: €5,000k) and retained earnings of €650,445k (2019: €605,395k). The breakdown of the movement between the financial statements and Solvency II are outlined in the table below.

Excess of assets over liabilities – Attribution of valuation difference	2020 €'000	2019 €'000
Total of reserves and retained earnings from financial statements	650,445	605,395
Difference in the valuation of assets	(748,618)	(641,802)
Difference in the valuation of technical provisions	585,453	506,675
Difference in the valuation of other liabilities	229,687	216,473
Reserves from financial statements adjusted for Solvency II valuation differences	716,968	686,741
Excess of assets over liabilities attributable to basic own fund items (excluding the reconciliation reserve)	5,000	5,000
Excess of assets over liabilities	721,968	691,741

The excess of assets over liabilities presented in the above tables are fully available for the absorption of policyholder losses and does not reflect the foreseeable dividend included in the Eligible Own Funds.

E.1.3 Information on Own Fund Items

Tier 1	The Tier 1 own funds of Vhi Insurance comprise retained earnings and €5,000k equity. These funds can be called on demand and are fully available to absorb losses on a going concern basis and in the case of winding up.
Tier 2	Vhi Insurance held no Tier 2 own funds at year end.
Tier 3	Vhi Insurance held no Tier 3 own funds at year end.

Per Section E1.1 above, the movement in Tier 1 own funds over the year is due to a combination of a foreseeable dividend and general business performance.

The reconciliation reserve represents the net asset value under Solvency II for Vhi Insurance less equity and subordinated debt own fund items. The reconciliation reserve has increased from €686,741k in 2019 to €696,968k in 2020.

There are no restrictions or adjustments applied to own fund items.

E.2 Solvency Capital Requirement and Minimum Capital Requirement

Vhi Insurance calculates the SCR using the standard formula. The table below sets out the SCR and MCR for Vhi Insurance as at year end 31 December 2020.

Capital Requirements	2020 €'000	2019 €'000
Solvency Capital Requirement (SCR)	342,956	337,977
Minimum Capital Requirement (MCR)	89,337	89,488

Solvency Capital Requirement (SCR) Requirements by sub-module	2020 €'000	2019 €'000
Market Risk	62,547	62,784
Counterparty Default Risk	9,680	18,776
Health Underwriting Risk	282,616	279,374
Operational Risk	45,302	42,480
Adjustments and Diversification	(57,190)	(65,437)
Solvency Capital Requirement (SCR)	342,956	337,977

No simplified calculations or undertaking specific parameters are applied in the calculation of the standard formula SCR for Vhi Insurance.

The MCR is bound by a maximum of 45% and a minimum of 25% of the SCR. Its calculation is based on a straight line formula including net technical provisions and premium written for the previous 12 months.

The increase in SCR during the year is primarily as a result of higher premium, as well as a reduction in Deferred Tax Liabilities.

E.3 Use of the duration – based equity risk sub-module in the calculation of the Solvency Capital Requirement

This section is not applicable to Vhi Insurance.

E.4 Differences between the standard formula and any internal model used

This section is not applicable to Vhi Insurance.

E.5 Non-compliance with the Minimum Capital Requirement and non-compliance with the Solvency Capital Requirement

This section is not applicable to Vhi Insurance.

E.6 Any Other Information

There is no additional material information regarding the capital management of Vhi Insurance that has not been disclosed above.

Appendix. Quantitative Reporting Templates

This appendix includes the annual Quantitative Reporting Templates (QRTs) for Vhi Insurance DAC in respect of year end 31 December 2020. All figures are shown in thousands (€'000). Please note there may be minor differences in totals due to rounding.

Reference	Template Name	Audited
S.02.01.02	Balance Sheet	✓
S.05.01.02	Premiums, Claims and Expenses by line of business	n/a
S.17.01.02	Non-Life Technical Provisions	✓
S.19.01.21	Non-Life Insurance Claims Information	✓
S.23.01.01	Own Funds	✓
S.25.01.21	Solvency Capital Requirement – for undertakings on Standard Formula	✓
S.28.01.01	Minimum Capital Requirement – Only Life or only non-life insurance or reinsurance activity	✓

S.02.01.02 Balance Sheet

		Solvency II Value 2020
		C0010
Assets		
R0030	Intangible assets	0
R0040	Deferred tax assets	0
R0050	Pension benefit surplus	88
R0060	Property, plant & equipment held for own use	12,928
R0070	Investments (other than assets held for index-linked and unit-linked contracts)	1,221,572
R0080	<i>Property (other than for own use)</i>	34,294
R0090	<i>Holdings in related undertakings, including participations</i>	0
R0100	<i>Equities</i>	0
R0110	<i>Equities - listed</i>	0
R0120	<i>Equities - unlisted</i>	0
R0130	<i>Bonds</i>	915,059
R0140	<i>Government Bonds</i>	296,323
R0150	<i>Corporate Bonds</i>	618,736
R0160	<i>Structured notes</i>	0
R0170	<i>Collateralised securities</i>	0
R0180	<i>Collective Investments Undertakings</i>	270,677
R0190	<i>Derivatives</i>	445
R0200	<i>Deposits other than cash equivalents</i>	1,098
R0210	<i>Other investments</i>	0
R0220	Assets held for index-linked and unit-linked contracts	0
R0230	Loans and mortgages	0
R0240	<i>Loans on policies</i>	0
R0250	<i>Loans and mortgages to individuals</i>	0
R0260	<i>Other loans and mortgages</i>	0
R0270	Reinsurance recoverables from:	170
R0280	<i>Non-life and health similar to non-life</i>	170
R0290	<i>Non-life excluding health</i>	0
R0300	<i>Health similar to non-life</i>	170
R0310	<i>Life and health similar to life, excluding health and index-linked and unit-linked</i>	0
R0320	<i>Health similar to life</i>	0
R0330	<i>Life excluding health and index-linked and unit-linked</i>	0
R0340	<i>Life index-linked and unit-linked</i>	0
R0350	Deposits to cedants	0
R0360	Insurance and intermediaries receivables	128,193
R0370	Reinsurance receivables	0
R0380	Receivables (trade, not insurance)	0
R0390	Own shares (held directly)	0
R0400	Amounts due in respect of own fund items or initial fund called up but not yet paid in	0
R0410	Cash and cash equivalents	15,172
R0420	Any other assets, not elsewhere shown	2,458
R0500	Total assets	1,380,582

		Solvency II Value 2020
		C0010
	Liabilities	
R0510	Technical provisions – non-life	387,554
R0520	<i>Technical provisions – non-life (excluding health)</i>	0
R0530	<i>TP calculated as a whole</i>	0
R0540	<i>Best Estimate</i>	0
R0550	<i>Risk margin</i>	0
R0560	<i>Technical provisions - health (similar to non-life)</i>	387,554
R0570	<i>TP calculated as a whole</i>	0
R0580	<i>Best Estimate</i>	364,396
R0590	<i>Risk margin</i>	23,157
R0600	Technical provisions - life (excluding index-linked and unit-linked)	0
R0610	<i>Technical provisions - health (similar to life)</i>	0
R0620	<i>TP calculated as a whole</i>	0
R0630	<i>Best Estimate</i>	0
R0640	<i>Risk margin</i>	0
R0650	<i>Technical provisions – life (excluding health and index-linked and unit-linked)</i>	0
R0660	<i>TP calculated as a whole</i>	0
R0670	<i>Best Estimate</i>	0
R0680	<i>Risk margin</i>	0
R0690	Technical provisions – index-linked and unit-linked	0
R0700	<i>TP calculated as a whole</i>	0
R0710	<i>Best Estimate</i>	0
R0720	<i>Risk margin</i>	0
R0740	Contingent liabilities	0
R0750	Provisions other than technical provisions	79,137
R0760	Pension benefit obligations	0
R0770	Deposits from reinsurers	170
R0780	Deferred tax liabilities	9,571
R0790	Derivatives	407
R0800	Debts owed to credit institutions	1,724
R0810	Financial liabilities other than debts owed to credit institutions	0
R0820	Insurance & intermediaries payables	100,269
R0830	Reinsurance payables	1,165
R0840	Payables (trade, not insurance)	0
R0850	Subordinated liabilities	0
R0860	<i>Subordinated liabilities not in Basic Own Funds</i>	0
R0870	<i>Subordinated liabilities in Basic Own Funds</i>	0
R0880	Any other liabilities, not elsewhere shown	78,617
R0900	Total liabilities	658,615
R1000	Excess of assets over liabilities	721,968

S.05.01.02.01 Premiums, Claims and Expenses by line of business

		Line of Business for: non-life insurance and reinsurance obligations (direct business and accepted proportional reinsurance)	Total
		Medical expense insurance	
		C0010	C0200
Premiums written			
R0110	Gross - Direct Business	1,536,556	1,536,556
R0120	Gross - Proportional reinsurance accepted	0	0
R0130	Gross - Non-proportional reinsurance accepted	0	0
R0140	Reinsurers' share	0	0
R0200	Net	1,536,556	1,536,556
Premiums earned			
R0210	Gross - Direct Business	1,510,081	1,510,081
R0220	Gross - Proportional reinsurance accepted	0	0
R0230	Gross - Non-proportional reinsurance accepted	0	0
R0240	Reinsurers' share	0	0
R0300	Net	1,510,081	1,510,081
Claims incurred			
R0310	Gross - Direct Business	1,082,994	1,082,994
R0320	Gross - Proportional reinsurance accepted	0	0
R0330	Gross - Non-proportional reinsurance accepted	0	0
R0340	Reinsurers' share	-3,850	-3,850
R0400	Net	1,086,844	1,086,844
Changes in other technical provisions			
R0410	Gross - Direct Business	0	0
R0420	Gross - Proportional reinsurance accepted	0	0
R0430	Gross - Non- proportional reinsurance accepted	0	0
R0440	Reinsurers' share	0	0
R0500	Net	0	0
R0550	Expenses incurred	185,905	185,905
R1200	Other expenses	0	0
R1300	Total expenses	185,905	185,905

S.17.01.02 Non-Life Technical Provisions

		Direct business and accepted proportional reinsurance	Total Non-Life obligation
		Medical expense insurance	
		C0020	C0180
R0010	Technical provisions calculated as a whole	0	0
R0050	Total recoverables from reinsurance/SPV and Finite Re after the adjustment for expected losses due to counterparty default associated to TP as a whole	0	0
Technical provisions calculated as a sum of BE and RM			
Best estimate			
Premium provisions			
R0060	Gross	83,658	83,658
R0140	Total recoverable from reinsurance/SPV and Finite Re after the adjustment for expected losses due to counterparty default	0	0
R0150	Net Best Estimate of Premium Provisions	83,658	83,658
Claims provisions			
R0160	Gross	280,739	280,739
R0240	Total recoverable from reinsurance/SPV and Finite Re after the adjustment for expected losses due to counterparty default	170	170
R0250	Net Best Estimate of Claims Provisions	280,568	280,568
R0260	Total Best estimate - gross	364,396	364,396
R0270	Total Best estimate - net	364,226	364,226
R0280	Risk margin	23,157	23,157
Amount of the transitional on Technical Provisions			
R0290	Technical Provisions calculated as a whole	0	0
R0300	Best estimate	0	0
R0310	Risk margin	0	0
Technical provisions – total			
R0320	Technical provisions - total	387,554	387,554
R0330	Recoverable from reinsurance contract/SPV and Finite Re after the adjustment for expected losses due to counterparty default - total	170	170
R0340	Technical provisions minus recoverables from reinsurance/SPV and Finite Re - total	387,383	387,383

S.19.01.21 Non-Life Insurance Claims Information

Total Non-Life Business

Z0010 Accident year / Underwriting year

2020

Accident year [AY]

Gross Claims Paid (non-cumulative)

(absolute amount)

		Development year											In Current year	Sum of years (cumulative)
Year		0	1	2	3	4	5	6	7	8	9	10 & +		
		C0010	C0020	C0030	C0040	C0050	C0060	C0070	C0080	C0090	C0100	C0110	C0170	C0180
R0100	Prior											-232	-232	-232
R0160	N-9	964,412	286,874	20,899	3,244	1,211	577	-227	-1,238	-805	-115		-115	1,274,833
R0170	N-8	997,792	259,361	17,986	3,036	1,297	-41	-973	-782	-97			-97	1,277,577
R0180	N-7	942,523	285,754	23,151	6,264	1,289	219	48	-152				-152	1,259,097
R0190	N-6	936,638	304,728	29,322	5,928	1,820	316	91					91	1,278,844
R0200	N-5	983,275	279,748	16,518	2,476	659	112						112	1,282,787
R0210	N-4	1,022,873	272,728	18,950	2,562	428							428	1,317,541
R0220	N-3	1,016,955	259,881	16,400	2,947								2,947	1,296,181
R0230	N-2	1,029,959	265,019	12,771									12,771	1,307,750
R0240	N-1	1,075,248	286,141										286,141	1,361,389
R0250	N	829,927											829,927	829,927
R0260													1,131,820	12,485,693

Gross undiscounted Best Estimate Claims Provisions

(absolute amount)

Development year												
Year	0	1	2	3	4	5	6	7	8	9	10 & +	Year end (discounted data)
	C0200	C0210	C0220	C0230	C0240	C0250	C0260	C0270	C0280	C0290	C0300	C0360
R0100	Prior										426	427
R0160	N-9	0	0	0	0	0	671	1,004	913	123	126	126
R0170	N-8	0	0	0	0	1,137	1,076	916	97	95		96
R0180	N-7	0	0	0	2,565	2,106	1,851	383	164			165
R0190	N-6	0	0	8,038	6,513	4,326	3,260	1,462				1,468
R0200	N-5	0	29,580	11,116	5,611	3,384	2,905					2,916
R0210	N-4	269,346	32,233	12,045	7,867	7,201						7,228
R0220	N-3	260,558	27,698	8,522	6,080							6,103
R0230	N-2	237,860	21,524	6,310								6,334
R0240	N-1	266,616	25,983									26,082
R0250	N	228,925										229,794
R0260											Total	280,739

S.23.01.01 Own Funds

Basic own funds before deduction for participations in other financial sector as foreseen in article 68 of Delegated Regulation 2015/35

R0010	Ordinary share capital (gross of own shares)
R0030	Share premium account related to ordinary share capital
R0040	Initial funds, members' contributions or the equivalent basic own - fund item for mutual and mutual-type undertakings
R0050	Subordinated mutual member accounts
R0070	Surplus funds
R0090	Preference shares
R0110	Share premium account related to preference shares
R0130	Reconciliation reserve
R0140	Subordinated liabilities
R0160	An amount equal to the value of net deferred tax assets
R0180	Other own fund items approved by the supervisory authority as basic own funds not specified above

Own funds from the financial statements that should not be represented by the reconciliation reserve and do not meet the criteria to be classified as Solvency II own funds

R0220	Own funds from the financial statements that should not be represented by the reconciliation reserve and do not meet the criteria to be classified as Solvency II own funds
-------	---

Deductions

R0230	Deductions for participations in financial and credit institutions
-------	--

R0290	Total basic own funds after deductions
-------	---

Ancillary own funds

R0300	Unpaid and uncalled ordinary share capital callable on demand
R0310	Unpaid and uncalled initial funds, members' contributions or the equivalent basic own fund item for mutual and mutual - type undertakings, callable on demand
R0320	Unpaid and uncalled preference shares callable on demand

Total	Tier 1 - unrestricted	Tier 1 - restricted	Tier 2	Tier 3
C0010	C0020	C0030	C0040	C0050
5,000	5,000		0	
0	0		0	
0	0		0	
0		0	0	0
0	0			
0		0	0	0
0		0	0	0
696,968	696,968			
0		0	0	0
0				0
0	0	0	0	0
0				
0	0	0	0	
701,968	701,968	0	0	0
0			0	
0			0	
0			0	0

APPENDIX. QUANTITATIVE REPORTING TEMPLATES

R0330	A legally binding commitment to subscribe and pay for subordinated liabilities on demand
R0340	Letters of credit and guarantees under Article 96(2) of the Directive 2009/138/EC
R0350	Letters of credit and guarantees other than under Article 96(2) of the Directive 2009/138/EC
R0360	Supplementary members calls under first subparagraph of Article 96(3) of the Directive 2009/138/EC
R0370	Supplementary members calls - other than under first subparagraph of Article 96(3) of the Directive 2009/138/EC
R0390	Other ancillary own funds
R0400	Total ancillary own funds

Available and eligible own funds

R0500	Total available own funds to meet the SCR
R0510	Total available own funds to meet the MCR
R0540	Total eligible own funds to meet the SCR
R0550	Total eligible own funds to meet the MCR

R0580 **SCR**

R0600 **MCR**

R0620 **Ratio of Eligible own funds to SCR**

R0640 **Ratio of Eligible own funds to MCR**

Reconciliation reserve

R0700	Excess of assets over liabilities
R0710	Own shares (held directly and indirectly)
R0720	Foreseeable dividends, distributions and charges
R0730	Other basic own fund items
R0740	Adjustment for restricted own fund items in respect of matching adjustment portfolios and ring fenced funds
R0760	Reconciliation reserve

Expected profits

R0770	Expected profits included in future premiums (EPIFP) - Life business
R0780	Expected profits included in future premiums (EPIFP) - Non- life business
R0790	Total Expected profits included in future premiums (EPIFP)

0			0	0
0			0	
0			0	0
0			0	
0			0	0
0			0	0
0			0	0

701,968	0	0	0	0
701,968	0	0	0	
701,968	0	0	0	0
701,968	0	0	0	
342,956				
89,337				
2.0468				
7.8575				

721,968				
0				
20,000				
5,000				
0				
696,968				

0				
0				
0				

S.25.01.21 Solvency Capital Requirement – for undertakings on Standard Formula

R0010	Market risk
R0020	Counterparty default risk
R0030	Life underwriting risk
R0040	Health underwriting risk
R0050	Non-life underwriting risk
R0060	Diversification
R0070	Intangible asset risk
R0100	Basic Solvency Capital Requirement
	Calculation of Solvency Capital Requirement
R0130	Operational risk
R0140	Loss-absorbing capacity of technical provisions
R0150	Loss-absorbing capacity of deferred taxes
R0160	Capital requirement for business operated in accordance with Art. 4 of Directive 2003/41/EC
R0200	Solvency capital requirement excluding capital add-on
R0210	Capital add-on already set
R0220	Solvency capital requirement
	Other information on SCR
R0400	Capital requirement for duration-based equity risk sub-module
R0410	Total amount of Notional Solvency Capital Requirement for remaining part
R0420	Total amount of Notional Solvency Capital Requirements for ring fenced funds
R0430	Total amount of Notional Solvency Capital Requirement for matching adjustment portfolios
R0440	Diversification effects due to RFF nSCR aggregation for article 304

Gross solvency capital requirement	
	C0110
	62,547
	9,680
	0
	282,616
	0
	-47,619
	0
	307,224
	45,302
	0
	-9,571
	0
	342,956
	0
	342,956
	0
	0
	0
	0
	0

Approach to tax rate

R0590 Approach based on average tax rate

Yes/No

C0109

2 – No

Calculation of loss absorbing capacity of deferred taxes

LAC DT

C0130

R0600	DTA
R0610	DTA carry forward
R0620	DTA due to deductible temporary differences
R0630	DTL
R0640	LAC DT
R0650	LAC DT justified by reversion of deferred tax liabilities
R0660	LAC DT justified by reference to probable future taxable economic profit
R0670	LAC DT justified by carry back, current year
R0680	LAC DT justified by carry back, future years
R0690	Maximum LAC DT

0
0
0
0
-9,571
-9,571
0
0
0
-44,066

S.28.01.01 Minimum Capital Requirement – Only Life or only non-life insurance or reinsurance activity

Linear formula component for non-life insurance and reinsurance obligations

		C0010
R0010	MCRNL Result	89,337

		Net (of reinsurance/SPV) best estimate and TP calculated as a whole	Net (of reinsurance) written premiums in the last 12 months
		C0020	C0030
R0020	Medical expenses insurance and proportional reinsurance	364,226	1,536,556
R0030	Income protection insurance and proportional reinsurance	0	0
R0040	Workers' compensation insurance and proportional reinsurance	0	0
R0050	Motor vehicle liability insurance and proportional reinsurance	0	0
R0060	Other motor insurance and proportional reinsurance	0	0
R0070	Marine, aviation and transport insurance and proportional reinsurance	0	0
R0080	Fire and other damage to property insurance and proportional reinsurance	0	0
R0090	General liability insurance and proportional reinsurance	0	0
R0100	Credit and suretyship insurance and proportional reinsurance	0	0
R0110	Legal expenses insurance and proportional reinsurance	0	0
R0120	Assistance and proportional reinsurance	0	0
R0130	Miscellaneous financial loss insurance and proportional reinsurance	0	0
R0140	Non-proportional health reinsurance	0	0
R0150	Non-proportional casualty reinsurance	0	0
R0160	Non-proportional marine, aviation and transport reinsurance	0	0
R0170	Non-proportional property reinsurance	0	0

Linear formula component for life insurance and reinsurance obligations

		C0040
R0200	MCRL Result	0

		Net (of reinsurance/SPV) best estimate and TP calculated as a whole	Net (of reinsurance/SPV) total capital at risk
		C0050	C0060
R0210	Obligations with profit participation - guaranteed benefits	0	
R0220	Obligations with profit participation - future discretionary benefits	0	
R0230	Index-linked and unit-linked insurance obligations	0	
R0240	Other life (re)insurance and health (re)insurance obligations	0	
R0250	Total capital at risk for all life (re)insurance obligations		0

	Overall MCR calculation	C0070
R0300	Linear MCR	89,337
R0310	SCR	342,956
R0320	MCR cap	154,330
R0330	MCR floor	85,739
R0340	Combined MCR	89,337
R0350	Absolute floor of the MCR	2,500

		C0070
R0400	Minimum Capital Requirement	89,337

Glossary

Community rating	PMI policyholders are charged the same premium for a particular PMI contract irrespective of age, gender or state of health, subject to certain prescribed exceptions.
Lifetime cover	PMI policyholders are entitled to renew their PMI contracts irrespective of factors such as age, health status or claims history.
Minimum benefits	PMI policyholders must be provided with certain minimum in-patient hospital cover.
Minimum Capital Requirement (MCR)	The level of capital below which an insurer is not permitted to go. It represents the final threshold that triggers supervisory action in the event that it is breached.
Generally Accepted Accounting Principles (GAAP) / Financial Reporting Standard (FRS)	These are accounting standards used for the preparation of financial statements.
Open enrolment	PMI insurers must accept all applicants for cover regardless of current age, sex or state of health, subject to certain waiting periods before claims may be made.
Own Funds	Own Funds are comprised of basic and ancillary own funds. Basic own funds refer to the excess of assets over liabilities, valued in accordance with Solvency II requirements. Ancillary own funds consist of items other than basic own funds which can be called up to absorb losses. They are categorised, i.e. tiered, based on set criteria.
Own Risk and Solvency Assessment (ORSA)	A set of processes used to provide insight, over the business planning time horizon, into the risk profile, capital requirements and strategy of an insurer. The information produced by these processes is used to support decision making.
Private medical insurance (PMI)	Insurance providing cover for costs incurred by private medical treatment or care due to illness, accident, infirmity or disability. Under Solvency II this is classified as Medical Expense Insurance.
Quantitative Reporting Templates (QRTs)	A set of standardised templates detailing financial and monetary information about an insurer.
Reinsurance	Insurance purchased by an insurer, used to transfer risk.
Risk Appetite Statement	The document which sets out the level and type of risk that an insurer is willing to take in order to achieve its business objectives.
Risk Profile	The specific risks to which an insurer is exposed. The risk profile of every insurer is different.
Risk-mitigation techniques	The methods used by an insurer to reduce risk exposure.

Solvency Capital Requirement (SCR)

The amount of capital that an insurer must hold that will enable them to absorb significant losses and gives reasonable assurance to policyholders and stakeholders that claims will be paid as they fall due. This amount is set at the worst 1 year loss that would be expected to occur in 200 years.

The SCR can be calculated using the Standard Formula, an internal model or a partial internal model.

Solvency II

A harmonising risk based prudential regulatory regime that applies to all insurance and reinsurance undertakings in the European Union, which came into force on 1 January 2016.

Solvency II Risk Margin

The value above the technical provisions equivalent to a theoretical amount of money needed for a third party to take over and meet all of the insurance obligations.

Solvency II Technical Provisions

A liability on the Solvency II Balance Sheet. Technical provisions are a 'probability weighted best estimate' of the future cashflows associated with insurance obligations, which have been recognised at the valuation date.

Standard Formula

A formula set out within the Solvency II regime which details the calculations for generating the Solvency Capital Requirement (SCR).

An insurer which chooses not to use the standard formula to calculate the SCR may use an internal model or partial internal model, subject to supervisory approval.

System of Governance

The system through which an insurer is organised and controlled.